

Grießwurz - Curare Vine



Pareira brava

“So awfully severe are these pains, that he is obliged to get down on his knees, press his head firmly against something, and remain in that position, forcing until he sweats profusely, "and roars like a bull," to use his own expression. After remaining in this situation for ten or twenty minutes, the urine dribbles away with great pain and frequent stoppages, scalding and lacerating at the point of the penis.”

(Dr. Hastings, 1855)

“It is a matter of surprise that a drug whose repute was formerly so high in bladder affections and whose value in our dilutions has been so often tested should not have ere this received a thorough proving according to our methods.”

(Editor of the Homoeopathic Recorder, 1887)

Inhalt / Content

Die Pflanze / The Plant

Namen / Names

Chondrodendron tomentosum, the Curare Vine

Pareira brava - Gerhard Madaus 1938

Pareira Brava oder Caapeba - Carl Ludovicus 1755

Pareire à feuilles rondes - E. Descourtilz 1827

What is true Pareira Brava? A look into the early history of the drug - Daniel Hanbury 1873

Die Familie der Mondsamengewächse - Otto Warburg 1921

Frühere Erfahrungen / Former Experiences

1741 - Von der amerikanischen Grieswurzel - Etienne-François Geoffroy

1938 - Von der Wirkung der Grieswurzel - Gerhard Madaus

Heilungen / Cures

1855 - A man aged 68 suffered awful pains on passing urine - Dr. Hastings

1870 - Catarrh of the bladder in a man of 60 years - A. H. Hull

1875 - Un médicament empirique contre les coliques néphrétiques - Dr Turrel

- English Translation by J. Compton Burnett

1883 - A woman could not pass urine in any position except on her knees since her confinement two weeks ago - W. J. Martin

1885 - Notes on Pareira brava - C. M. Foss

1886 - Neuralgia of the bladder

Klinische Hinweise / Clinical Hints

1903 - Pareira brava in der Nierenkolik - Dr. Sieffert

Hering's Guiding Symptoms

Leitsymptome und Charakteristika / Keynotes and Characteristics

1866 - Adolph Lippe

1902 - John H. Clarke

1915 - Cyrus M. Boger

1927 - William Boericke

1929 - N. M. Choudhuri

Bibliographie / Bibliography

Die Pflanze / The Plant



Die Pflanze / The Plant

Übersicht / Overview

Namen / Names

Chondrodendron tomentosum, the Curare Vine

Pareira brava - Gerhard Madaus 1938

Pareira Brava oder Caapeba - Carl Ludovicus 1755

Pareire à feuilles rondes - E. Descourtilz 1827

What is true Pareira Brava? A look into the early history of the drug - Daniel Hanbury 1873

Die Familie der Mondsamengewächse - Otto Warburg 1921

Namen / Names

Pareira brava.

Botanical: Chondrodendron tomentosum.

curare, ourari, woorari

span.: uva-da-serra, uva-do-mato, amphihuasca blanca, antinupa, comida de venados

engl.: curare vine, velvet leaf, virgin vine

dt.: Grießwurz, behaarter Knorpelbaum

fr.: liane à coeur, liane à serpent, vigne sauvage

Chondrodendron tomentosum, the Curare Vine

Curare vine (*Chondrodendron tomentosum*) is a member of the family of the Menispermaceae. It is a native of the Amazon Basin and found growing in Brazil, Bolivia, Peru, Guiana, Ecuador, Panama and Colombia. This woody vine, sometimes 4 inches thick at its base, climbs a considerable height up into the canopy of the rainforest (up to 30 meters high). Its large heart-shaped leaves have a soft silky underside made up of tiny white hairs, giving the plant the common name of *velvet leaf*. It has both male and female flowers which are small, greenish-white, and grow in clusters. It produces an edible bitter-sweet fruit.

Curare vine is one of the plants which South American natives use as ingredient for the preparation of Curare, the feared arrow poison. As the Indians in Venezuela and the Guianas use *Strychnos* plants as the main ingredient, tribes in Peru, Ecuador and Brazil use curare vine as the main ingredient in their poisons. The word *Curare* is a corruption of two Tupi Indian terms meaning "bird" and "to kill." The root contains a number of alkaloids. The main alkaloid responsible for the muscle-relaxant actions (and why it works as an arrow poison) is called *d-tubocurarine*. It was first isolated in 1897 and obtained in drug form in 1935. The alkaloid works by blocking the signals in the brain which tell the muscles to move - thereby rendering the whole body immobile to the point of becoming virtually paralyzed. It's not a toxin - and the effects generally wear off in about 90 minutes. In 1942 curare and d-tubocurarine were introduced into clinical anaesthesia, starting the modern era of surgery.

Curare vine also holds a place in herbal medicine systems. In Brazil and Peru the root of the vine is used to increase urination, reduce fever and promote menstruation. It is also used to treat edema, kidney stones and testicular inflammation. Externally it is used for bruises and contusions. In Brazil the leaves are also crushed and applied externally for the treatment of poisonous snake bites. Portuguese missionaries learned the application of the remedy for urinary and renal troubles from Brazilian natives and made it known as "Pareira".

(Sources: Taylor 2005, Rätsch 1987, tropical/theferns.info)

Pareira brava - Gerhard Madaus 1938

von *Chondrodendron tomentosum*, Grießwurz, Menispermaceae.

Name: *Chondrodéndron tomentosum* Ruiz et Pavon. Grießwurz. *Englisch:* Virgin vine; *französisch:* Pareira brava.

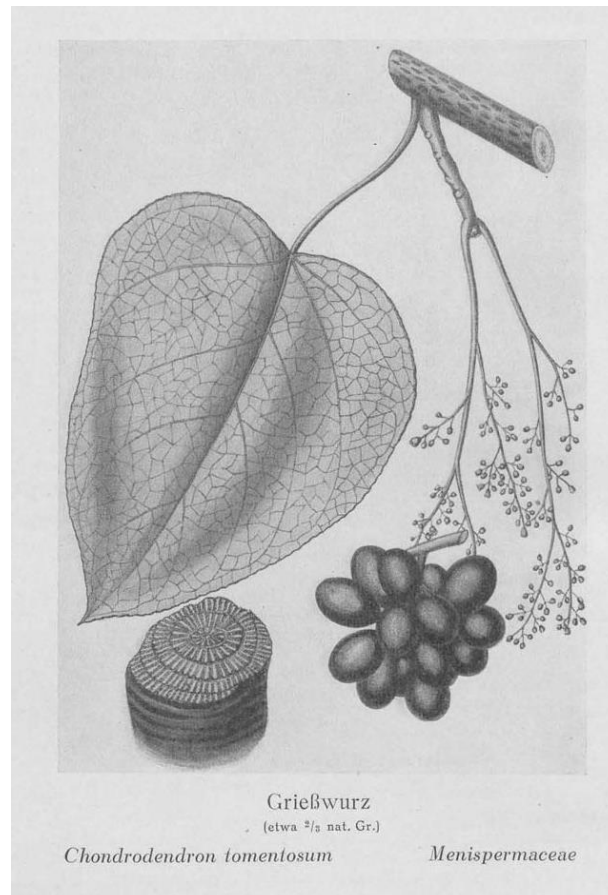
Verbreitungsgebiet



Chondrodendron tomentosum. Pareira brava.

Namensursprung: *Chondrodéndron* von $\chi\acute{o}\nu\delta\rho\varsigma$ (chondros) = Korn, Krümchen und $\delta\acute{\epsilon}\nu\delta\rho\nu$ (dendron) = Baum, *tomentosus* = filzig. In der Literatur auch *Chondrodendron* genannt, bei Tschirch neben Pareirawurzel auch Pereirawurzel.

Botanisches: *Chondrodendron tomentosum* ist ein holziger Kletterstrauch von beträchtlicher Größe. Der Stengel erreicht 10 cm im Durchmesser. Rinde rau. Blätter wechselständig, Blattstiele sehr lang, an beiden Enden verdickt. Spreite breit eiförmig, am Grunde mehr oder weniger herzförmig, am oberen Ende stumpf oder zugespitzt, ungeteilt, ungefähr 12,5 cm lang (unsere Art soll 30 cm erreichen), ziemlich dick und lederartig, kahl und oberseits grün, unterseits dicht bedeckt und mit einem feinen, kurzen, grauen Haarfilz, am Grunde fünfnervig, die Mittelrippe stark entwickelt, die Adern unterseits hervortretend. Blüten eingeschlechtlich (zweihäusig?), sehr klein, in lockeren, verlängerten Rispen, Blütenstiele kürzer als die Blüten. Männliche Blüten: sechs Kelchblätter in zwei Reihen, verkehrt-eiförmig bis spatelig, aufrecht, glatt, fleischig, außen umgeben von drei Quirlen von dachziegelartig liegenden, eiförmigen, gewimperten, außen behaarten Nebenblättern, drei in jedem Quirl, die äußeren die kleinsten, sechs kleine, schuppenförmige, eiförmige Kronenblätter, sechs Staubgefäße, die mit den Kronenblättern abwechseln. Die Staubfäden breit, das Connektiv ausgedehnt, über die Staubbeutel in einem Fortsatz verlängert, der nach der Mitte der Blüte gedreht ist. Keine Spur eines Stempels. Weibliche Blüten: Blütenhülle wie bei den männlichen Blüten, Staubgefäße entweder fehlend oder sehr klein rudimentär. Fruchtknoten gewöhnlich sechs, aufrecht, auf einem kurzen Fruchtknotenträger glatt, einfächrig, mit einem einzigen, seitlich befestigten Ei. Die Frucht zusammengesetzt aus sechs (oder einer geringeren Zahl) völlig getrennten, länglich eiförmigen, glatten, purpur-schwarzen Steinfrüchten, jede fast 2,5 cm lang auf kurzem Stiel am verdickten, holzigen Fruchtknotenträger, von dem sie strahlig abspreizen. Fleisch der Frucht spärlich, Kerne dünn, lederig, oval, mit einer Scheidewand, die von der Basis halbwegs zur Spitze der Höhlung läuft. Same stark gekrümmt, verdoppelt über der Scheidewand, an welcher er angeheftet ist. Samenschale dünn, häutig. Keimling, bestehend aus zwei sehr großen Keimblättern und einer kleinen Wurzel. Kein Endosperm. - Heimat: Brasilien.



Geschichtliches und Allgemeines: Als portugiesische Missionare im 17. Jahrhundert nach Brasilien kamen, lernten sie den Gebrauch einer Wurzel kennen, die von den Indianern unter dem Namen Abutua oder Butua gegen Steinleiden verwendet wurde und der man große Heilkräfte nachrühmte. Die Droge wurde nach Lissabon gebracht und erregte dort die Aufmerksamkeit vieler Personen, darunter auch die von Amelot, dem Gesandten Ludwig XIV., der einige Exemplare im Jahre 1688 nach Paris mitnahm. Der bekannte Botaniker Tournefort beschrieb die Wurzel und brachte eine Abbildung. Ein Zeugnis für die Wirksamkeit gab auf Verlangen der französischen Akademie Professor Geoffroy, der verschiedene erfolgreiche Fälle bei der Behandlung von Blasenentzündung und Harnverhaltung anführte. Helvetius, der Leibarzt Ludwig XIV. und Ludwig XV., wandte die Droge viele Jahre mit großem Erfolge an. Durch Sloane wurde sie in England bekannt, während sich Lochner 1719 Verdienste um ihre Einführung in Deutschland erwarb. Hauptsächlich wurde die Pareira bei Erkrankungen der Harnorgane gegen Grieß und Harnsteine sowie gegen Gelbsucht verwendet. Über den botanischen Ursprung herrschte lange Zeit Unklarheit, auch Linné war noch der Ansicht, daß *Cissampelos pareira* die Mutterpflanze sei."

(Gerhard Madaus, Lehrbuch der biologischen Heilmittel, Bd. 3, Leipzig 1938, Pareira brava, S. 2057-2059)

Pareira Brava oder Caapeba - Carl Ludovicus 1755

"Pareira - Brava, oder Caapeba, imgleichen Butua, ist ein brasilianisches Gewächs, welches wegen seiner Art zu wachsen, den Namen erhalten hat, der so viel als einen wilden Weinstock anzeigt. Der französische Staatsrath Amelot hat es 1688 zum ersten aus Portugall, wo er als Gesandter gestanden, mit nach Frankreich gebracht, von dar es hernach weiter bekannt worden. Es treibt lange Ranken, welche zuweilen die Bäume hinan laufen, und sich um dieselben schlingen; bisweilen aber sich zur Erde neigen, und darauf herum kriechen. Die Blätter sind sehr dünne, einige sind rund, die andern sehen wie Herzen, und oben her schön grün,

unten weißlich. Zwischen denenselben erheben sich braunrothe Stengel, die im Julius auf ihren Spitzen gelbliche oder blaßgelbe Blumen bringen. Diese bestehen aus 8 Blättern, wovon viere klein und rundlich sind, unter denselben ist ein anderes großes und rundes, und zwischen denselben noch drey kleinere befindlich. Auf eine jedwede Blume folget die Frucht, welche groß, wie eine Erbse, und länglicht-rund, auswendig roth, inwendig grün. Die Wurzel ist holzig, hart, gewunden, der Länge nach und in die Runde eingekerbt, und inwendig gleichsam mit verschiedenen holzigten Fasern durchzogen, daß sie also, wenn sie queer durchschnitten wird, verschiedene concentrische Cirkel vorstellet, die von ihrem Mittelpuncte an mit verschiedenen Strahlen durchschnitten sind. Sie ist, wenn sie noch jung ist, fast so dicke als ein Finger, und grau; wenn sie aber alt wird, so wird sie des Arms dicke und schwarz. Inwendig sieht sie braungelb; diese ist die gewöhnlichste. Ferner hat man noch eine andere Art, so aufwendig weiß, und inwendig citronengelb gefunden wird. Übrigens ist die Wurzel inwendig dicke und ölicht; und schmecket bitterlich, wird aber zuletzt süßlich, wie Süßholz; hingegen hat sie keinen Geruch. Ungeachtet zwar auch das Kraut zum arztneylichen Gebrauche angewendet wird; so kommt doch nur die Wurzel insonderheit in Betrachtung. Und daher ist auch die Wurzel das einzige, was von diesem Gewächse in den Handlungen der Droguisten und Apotheker geführt wird. Man bekommt solche von den Portugiesen, die sie aus Brasilien bringen; die Handlung mit derselben aber ist eben noch nicht sehr stark." (Carl Günther Ludovici, Eröffnete Akademie der Kaufleute oder vollständiges Kaufmanns-Lexicon, Vierter Theil, N bis S, Leipzig 1755, Pareira brava, S. 472-473)

Pareira à feuilles rondes - E. Descourtilz 1827

(Alexitère interne)



Synonymie. Liane à coeur. Liane à serpent. Liane quinze jours. Pareira brava. Caapeba butua; herbe Notre-Dame. - Cissampelos (Pareira) foliis peltatis, cordatis, emarginatis. Lin., Dioecie Monadelphie. - Jussieu, Class. 13, ord. 17, famille des Ménispermées. - Cissampelos scandens, foliis peltatis, orbiculatis, cordatis, villosis, floribus masculis, racemosis; femineis spicatis, spicis foliatis. Brown, Jam., p. 357. - Cissampelos foliis margine petiolatis. Burm, Amér., p. 56, tab. 67, fig. 2. - Caapeba folio orbiculari, non umbilicato. Plum., Gen., pl. 33, t. 29. - Clematis baccifera, glabra et villosa, rotundo et umbilicato folio. Sloan., Jam., 85. Hist. 1, p. 200. - En espagnol, *Pareira brava*. - En portugais, *Pareira brava do Brasil*. - En anglais, *Cissampelos*, *Wild-Vine*. - En brésilien, *Caapeba membrocq*. - Natsjatam, Rheed. Hort mal., vol. 7, p. 1, tab. 1.

Caractères génériques. Fleurs polypétalées, de la famille des Ménispermées; plantes grimpanes, à feuilles alternes; fleurs très-petites et disposées en grappes axillaires, latérales ou terminales; fleurs dioïques. *Dans les mâles*, un calice à quatre folioles, point de corolle; quatre étamines dont les filets sont réunis et attachés sur un disque dans le centre de la fleur. *Dans les femelles*, un calice d'une seule pièce; trois stigmates, une baie globuleuse, monosperme. (Encycl.)

Caractères particuliers. Feuilles cordiformes, presque orbiculaires, velues en dessous; fleurs mâles et femelles en épis, et garnies de bractées.

Histoire naturelle. Cette racine fameuse, rapportée en France en 1688 par Amelot, à son retour de l'ambassade de Portugal, fut mise ensuite en réputation par Lochner, en Allemagne. Elle croît aux lieux montueux de l'Amérique, au Brésil, à Saint-Domingue, à Cuba, à la Jamaïque, à la Martinique et dans les autres îles Antilles, où les nègres en font le plus grand cas comme remède et comme alexitère. *Pareira brava*, en portugais, signifie vigne sauvage ou bâtarde; *butua*, en indien, signifie bâton.

Caractères physiques. C'est à tort qu'on a confondu dans l'Encyclopédie le *Pareira brava* avec le *Menispermum cocculus* qui fournit la coque du Levant. Les fruits et les feuilles diffèrent essentiellement, puisque les fruits comprimés à une seule loge du *Pareira brava* sont accompagnés de bractées sessiles, tandis que ceux du *Menispermum cocculus* sont en grappes lâches, à trois coques dépourvues de bractées. (Voy. Flore du Dict. des Sc.médicales, 35^e livr.)

Les racines du *Pareira brava* sont dures, tortueuses, et rugueuses, brunes à l'extérieur, jaunes à l'intérieur; inodores et très-amères, et marquées par beaucoup d'anneaux concentriques.

Les tiges sont ligneuses, grimpantes, cylindriques, striées, pubescentes, pourvues de feuilles alternes, pétiolées, presque orbiculaires, échancrées en cœur, entières, mucronées à leur sommet, vertes et glabres en dessus, velues, soyeuses et blanchâtres en dessous; remarquables par sept nervures divergentes et rameuses.

Les fleurs mâles sont petites, disposées en panicules courtes, latérales, pédonculées, solitaires ou géminées, à peine de la longueur des pétioles; leurs ramifications velues, dichotomes, presque capillaires; de très-petites bractées velues, à peine sensibles.

Les fleurs femelles sont réunies en grappes plus allongées, tomenteuses et pendantes, plus longues que les feuilles, réunies d'une à trois dans l'aisselle des pétioles, accompagnées de bractées sessiles de même forme, mais plus petites que les feuilles.

Les fruits sont des baies rougeâtres comprimées, un peu gibbeuses, à une seule loge, hérissées de longs poils caducs, amincies et ridées à leurs bords. (Fl. du Dict. des Sc. méd.)

Propriétés médicinales. Les vertus de cette racine, quoique contestées par les réformateurs systématiques et impitoyables de la médication végétale, n'en sont pas moins réelles et mille fois reconnues aux colonies dans les néphrites calculeuses et les dysuries. Elle divise évidemment les matières visqueuses qui engouent les bronches des poumons, et elle facilite l'expectoration d'une manière prompte et sensible. On l'emploie aussi dans la gonorrhée et pour

arrêter certaines hémorragies. Poupée-Desportes, praticien célèbre, instruit par une expérience consommée, proclame comme supérieure à toute autre, dans les gonorrhées, une tisane faite avec les feuilles de cette liane à cœur, l'écorce de la liane à savon, les racines du petit balisier, du Marcgrave à ombelles, de la malnommée et de la verveine puante; mais les racines de *l'herbe à colet*, infusées à froid, l'emportent, dit-il, sur toutes les autres. Certes l'assertion véridique d'un médecin aussi distingué peut bien aussi l'emporter sur les suppositions exagérées des partisans de la doctrine du docteur Sangrado, qui, par esprit de contradiction, n'écrivent dans leur cabinet l'histoire des plantes que pour les décrier et pour en renier les propriétés. Quoi qu'il en soit, j'ai éprouvé, pendant six ans, dans les hôpitaux que je desservais, la liane à cœur, et j'ai toujours eu à me louer de son usage. Je dirai de même de l'utilité des feuilles appliquées sur les plaies et sur les ulcères dont elles accélèrent notablement la cicatrisation. Que ces mêmes détracteurs osent renier au suc de cette liane sa faculté de neutraliser incontinent les morsures des serpents venimeux! J'ai mille faits exacts et bien observés qui m'autorisent à publier la propriété de ce précieux don de la nature, observations faites dans tous les cas surtout où les moyens généraux, quoique rationnels, avaient échoué, et où la perte des malades était assurée, malgré la cautérisation pratiquée dans un temps opportun, et dont cet antidote végétal triompha. Sur cinq nègres mordus par des serpents, et entrés à l'hôpital de Saint-Pierre (Martinique), trois furent guéris en employant le *Pareira brava*; les deux autres périrent en quatre heures de temps pour n'avoir pu le leur administrer. On conçoit que de l'Europe on ne peut se permettre de trancher aussi brusquement sur une semblable question, et qu'il est téméraire de vouer inexorablement à l'oubli des plantes précieuses qu'on n'y a point employées. *Studio doctor, experientia medicus.*

Mode d'administration. Cette racine se donne en poudre depuis une dragme jusqu'à deux gros. Trois gros suffisent pour deux livres d'eau qu'on fait réduire à moitié. La dose de la teinture alcoolique est d'un gros."

(E. Descourtilz, Flore pittoresque et médicale des Antilles, tome 3, Paris 1827, Pareira à feuilles rouges, p. 231-234)

What is true Pareira Brava? A look into the early history of the drug - Daniel Hanbury 1873

"The botanical origin of the various stems and roots known as Pareira Brava is extremely obscure. By most writers the drug referred without question to *Cissampelos Pareira Linn.*, a climbing plant of the order *Menispermaceae* growing in the tropical regions of both the Old and New World.

Some years ago the difficulty of purchasing *Pareira Brava* of good quality in London induced me to seek a supply in the West Indies. I accordingly procured on behalf of the firm of which I was then a member, a quantity of the stems and roots of *Cissampelos Pareira L.*, collected in Jamaica under the supervision of Mr. N. Wilson, director of the Bath Botanical Garden in that island. The first importation was accompanied by herbarium specimens of the plant, the examination of which removed all doubt as to its origin. I also obtained specimens of stems of *Cissampelos Pareira* similarly authenticated, from correspondents in Trinidad, Brazil and Ceylon.

From these materials it at once became evident that the long-accepted statement that *Pareira Brava* is derived from *Cissampelos Pareira Linn.* was erroneous. ⁽¹⁾ In fact neither the stem nor the root of the plant at all resembles any of the forms of that drug had ever met with in commerce.

What then is *true Pareira Brava*? - To answer this question we must look back to the early history of the drug.

The merit of first given some account of *Pareira Brava* is usually conceded to the Dutch traveller Piso, who in his work *De Medicina Brasiliensi*, published in 1648, described a plant called by the Portuguese *Caapeba*, *Cipó de Cobras* or *Herva de Nossa Senhora*. Piso's figure is scarcely recognizable, but his description of the fruit as resembling the catkins of hop (*semen magnum coloris rosacei, e capsulis lupulo similibus prominens*) applies well enough to a *Cissampelos*, and in fact *C. glaberrima* St. Hil. is known under these Portuguese names in Southern Brazil at the present time. My friend Mr. J. Correa de Mello, of Campinas, Prov. S. Paulo, has been good enough to send me a specimen of this plant and of its root; and the latter I find to be wholly unlike any sort of *Pareira Brava*.

That Piso does not mention *Pareira Brava* was indeed remarked as long ago as 1710⁽²⁾; and it is only since the drug has been supposed to be derived from *Cissampelos* that authors have identified it with Piso's *Caapeba*.

Pareira Brava was certainly first brought to Europe by the Portuguese. It first attracted general attention in 1688, when Michel Amelot, Marquis de Gournay, a privy councillor of Louis XIV, and a very distinguished political personage, brought it with him from Lisbon whither he had been sent as ambassador by the French king. There can be no doubt that the drug was considered to possess extraordinary properties. Rouillé, the successor of Amelot in the Lisbon embassy, also took home with him to Paris some *Pareira Brava*; and in 1710 we find it claiming the notice of the French Academy⁽³⁾, who requested Etienne-François Geoffroy, Professor of Medicine and Pharmacy in the College of France, to investigate its virtues. Jean-Claude-Adrien Helvetius, a physician of great merit, who though a young man was consulted by Louis XIV. in his last days, and was afterwards attached to the court of Louis XV, tried the new drug still earlier,⁽⁴⁾ and gave strong testimony in its favour.

Both Geoffroy and Helvetius were correspondents of Sir Hans Sloane, that diligent promoter of science whose immense collections gave origin to the British Museum, - and among the Sloanian MSS. I have found a letter of Helvetius⁽⁵⁾ addressed in 1715 to Monsieur Duyvenvoorde, ambassador from the States General to George I., a portion of which I will here quote:

"I am extremely pleased S^r that you have apply'd yo^r self to me for my advice about the use of the *Pareira Brava* which has been recommended to you, because I can give you a very good account of it having been one of the first that introduced it in France. I have made abundance of lucky experiments about it which have made this medicine very well known to me, wherefore I assure you, you can do nothing better than to make try all of it. . . The Pareira Brava is a root which comes to us from Brazil by the way of Lisbon, but which the war has rendered pretty scarce; however it is to be found among the good druggists and is sold [at] Paris for 40 livres the pound. 'Tis called in Brazill the Universall Medicine, and made use of there in all kinds of distempers. A Capuchin monk who came from thence told me he could not give it a greater character than by assuring me that in all their voyages they carried the gossell in one pockett and the Pareira Brava in another. . ."

Helvetius recommended the finely-powdered root in five grain doses, to be taken in infusion warm like tea.

Petiver, apothecary of London, and secretary to the Royal Society, an active collector of objects of natural history of every kind, whose letters are also in the Sloanian collection, thus wrote, Dec. 11th, 1716, to Colonel Worsley, His Majesty's Envoy at Lisbon: -

" I am glad to hear y^e Brasil fleet is safely arrived, w^{ch} I hope has brought some materials for mys Succeeding *Collectaneas*, and amongst them nothing can be more welcome than specimens of y^e leaves and fruit of y^e Ipecacuanha, Pareira Brava, Balsam Capevae and y^e true Brasile and Brasiletto woods, all which will be very acceptable discoveries. . . ." ⁽⁶⁾

The first author to give an account in print of *Pareira Brava* seems to be Pomet, whose *Histoire des Drogues* was completed in 1692.⁽⁷⁾ He describes the drug as then recently seen in

Paris, and he figures the specimen given him by Tournefort.

Geoffroy, in his excellent *Tractatus de Materia Medica* ⁽⁸⁾, a work he did not live to complete, calls the drug by its Brazilian name of *Butua*, or *Pareira Brava* of the Portuguese, and describes it as a root, woody, hard, contorted, externally of dark colour, rough, with many wrinkles, some long, some running round it transversely, like that of *Thymelaea* [*Daphne Gnidium* L.], internally of a dull, yellowish hue, knit together, as it were, with many woody fibres, so that when cut transversely it exhibits several concentric circles, intersected by numerous rays of fibres passing from the centre to the circumference; inodorous, somewhat bitter, with a certain degree of sweetness like liquorice, as thick as the finger, or sometimes as a child's arm. He adds that the Brazilians and Portuguese most highly extol its virtues as a diuretic, lithontriptic, vulnerary, stomachic, cordial, and alexipharmic, ⁽⁹⁾ and, in fact, regard it as a complete panacea.

The question now arises - Can the drug which was introduced with so much of laudation be clearly identified?

As already stated, Pomet has figured it, and his engraving is excellent. But Sloane has left us better materials. In his collection of materia medica, now in the British Museum, there are many well-preserved specimens of the drug obtained from different persons and at different periods, *and all of one kind*; and in his voluminous manuscript catalogues and his other papers, are entries throwing light on their origin.

The first notice I have found is a letter from Lisbon, dated October 17th 1699, addressed by Joseph Geston to John Ellis, ⁽¹⁰⁾ in which the writer says: -

"By order of my brother, Wm. Geston, I send you here inclosed six sticks of *Pareira Brava*, or *Parra Brava*. The use of it, I am informed, is in powder, one scruple, and to the strongest patient one octave [drachm] in Rhenish wine. . . Its virtues are for the stone, gravell, obstruction of the urine, and for the colick, - a very excellent remedy."

Though this letter is not addressed to Sloane, nor is he mentioned in it, yet from its occurrence among his correspondence there can be no doubt that the specimens to which it relates were intended for him.

The entries in his manuscript catalogues, which are in his own handwriting, are these: -

652. *Pareira Brava*. - From Brasile, pretended to be good for the stone.

4039. *Pareira Brava*. - A root used in the stone."

6708. The *Pareira Brava*, of a brown colour, from Brazil, said to be the best sort. - From Mons^r.

Geoffroy.

10471. Sevil specimens of the *Pareira Brava*, from Lisbon, accounted a great remedy in suppression of water and the stone, - according to Mons^r. Geoffroy, the *Ambitua* or *Butua* of Zanoni. - From Dr. Fuller, Sevenoaks.

In 1866, I applied to my friend Theodor Peckolt, druggist, of Rio de Janeiro, then residing at Cantagallo in the same province, on the subject of *Pareira brava*, in consequence of which I received from him specimens of two plants, the one marked *Butua* or *Pareira Brava legitima*, the other *Butinha* or *Pareira Brava miuda* (literally *small Pareira Brava*), together with a large dried entire plant of the former. The herbarium specimens of these plants presented no characters by which I could distinguish them as two species; and Mr. Peckolt subsequently informed me that their difference consists chiefly *in habit*, and that the first or *legitimate* *Pereira Brava* is found in much drier situations than the small sort or *Pereira Brava miuda*.

I have also received specimens from my friend Mr. J. Correa de Mello of Campinas, marked *Parreira Brava pequena* (*small Pareira Brava*) or *Abuta pequena*, and others labelled *Leaves of the plant producing Pareira Brava*, all of which seem referable to Mr. Peckolt's plant. Mr. Correa de Mello has likewise sent me the dried root, and I have also received the root as

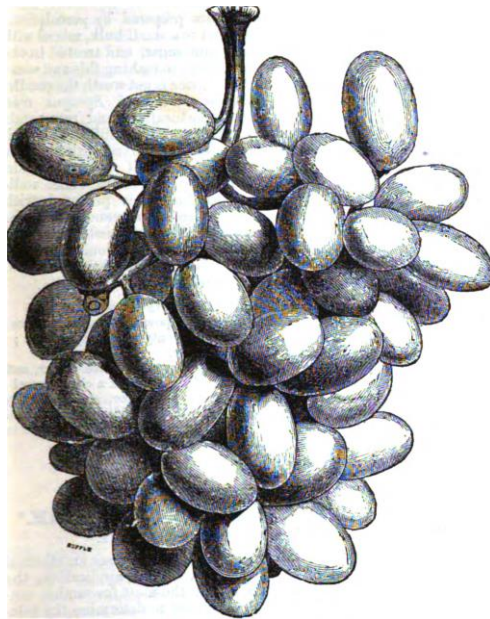
supplied by a drug house of Rio de Janeiro.

Within the last few weeks two specimens of roots bearing some leaves, marked respectively *Pareira Brava, large leaf*, and *Pareira Brava, small leaf*, have been presented to the Pharmaceutical Society as well as to myself by Mr. G. B. Francis of the firm of Hearon, Squire, and Francis. Between these two sorts I fail to recognize any difference.

The roots of Mr. Peckolt's *Pareira Brava legitima*, those sent me by Mr. Correa de Mello, and those received from Mr. Francis, completely agree with Sloane's specimens, as well as with Pomet's figure.

As to the plant, I identify it with *Chondrodendron* ⁽¹¹⁾ *tomentosum* of Ruiz et Pavon, with an authentic specimen of which in the herbarium of the British Museum I have compared it. It is the *Cocculus Chondrodendron* of De Candolle (Prod. I. 98), and has been figured as *Cocculus* (?) *platyphylla* by Auguste de St., Hilaire, ⁽¹²⁾ and by Eichler ⁽¹³⁾ as *Botryopsis platyphylla* Miers. It agrees well with the plate of *Cissampelos Abutua* in Vellozo's *Flora Fluminensis* ⁽¹⁴⁾ with which Eichler doubtfully identifies it.

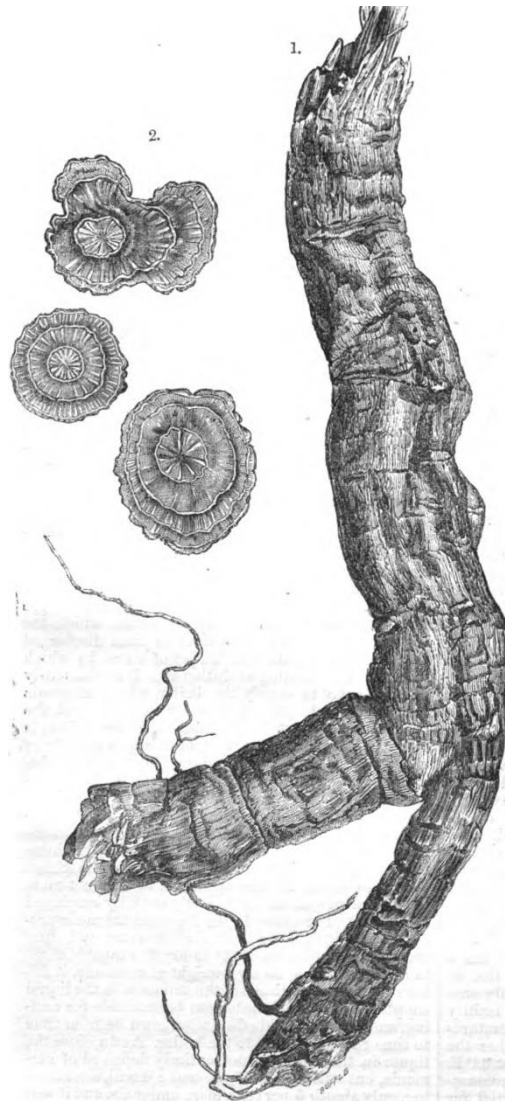
Chondrodendron tomentosum has been found in various parts of Brazil where it is known as *Butua* and *Abutua*. Its raceme of large oval berries, exactly like a bunch of grapes, is another evidence that it is the plant which the old Portuguese colonists called *Pareira Brava* or *Wild Vine*. ⁽¹⁵⁾ Neither the fruit, nor the foliage of *Cissampelos Pareira* have anything about them suggestive of a grape vine.



Bunch of fruits of *Chondrodendron tomentosum*. R. ET P.
From a specimen preserved in alcohol, sent to me by Mr. Peckolt.

The root of *Chondrodendron* cannot be confounded with the stem, which is woody and fibrous and of a different structure. Geoffroy's description of the former which I have translated at page 81 is correct so far as it goes. I may add that the numerous specimens I have seen present but little variation. All are portions of a tortuous, branching root, wrinkled longitudinally and having transverse fissures, constrictions, or ridges. The root is externally of a blackish-brown, and light yellowish brown within. In Mr. Francis's drug there are young roots having the remnants of green aerial stems rising from their upper part. In Mr. Peckolt's specimen the aerial stems are fully preserved, as thick as the finger and many feet in length. The root seems to be gorged with juices so that under the penknife it cuts more like a very hard fat or wax than as a fibrous wood. In transverse section it does not display zones of the same regular and

beautiful definition that one sees in ordinary *Pareira Brava*. In the root of *Chondrodendron* there is a large well-marked central column composed of wedges diverging from a common axis, around which are arranged a few concentric rings intersected by wedge-shaped rays which are often irregular, scattered, and indistinct. The axis is not often eccentric.

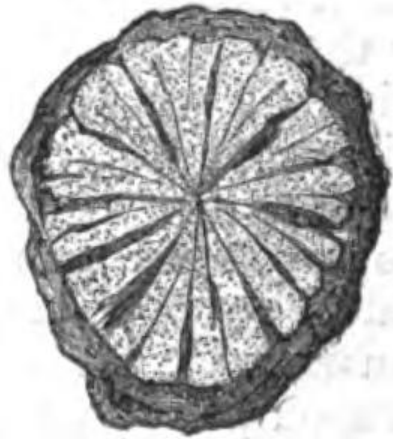


True *Pareira Brava* - Root of *Chondrodendron tomentosum*.

1. From a sample purchased in London in 1862.

2. Sections of roots received from Mr. J. Correa de Mello.

In *Cissampelos Pareira* the root and stem are nearly alike in structure, and in transverse section show no concentric rings. Those received from Jamaica, which were the largest that could be collected, were rarely so much as an inch in diameter, and in many localities it is difficult to obtain the stem or root thicker than a goose quill.



Transverse section of stem of *Cissampelos Pareira* L. From a Jamaica specimen.

The *Pareira Brava* of English commerce is mostly of larger size than the root of *Chondrodendron*, and is a much more woody substance. Its internal structure, which is familiar to most druggists, is very remarkable, consisting of a series of layers which are often developed exclusively in one direction. Nothing is known of the botanical origin of this drug, beyond the fact that the structure of the wood is that of the order *Menispermaceae*.

Of late years even this sort has become rare, and its place has been taken by a drug completely devoid of medicinal power. This latter consists of cylindrical woody truncheons which have an internal structure not very diverse from that represented below, though generally less eccentric, with always a distinct central pith. The wood is tasteless, and often seems to have been injured by damp. It should be rigidly excluded from pharmaceutical use.



Root (?) commonly known as *Pareira Brava*, and erroneously regarded as derived from *Cissampelos Pareira* L.

Several other sorts of *Pareira Brava* are known at least in South America. One, of which there is a parcel now in the London market, is remarkable for its large size, and for being internally of a fine yellow. As it is also very bitter, it probably contains berberine.

Another sort is derived from *Abuta rufescens* Aublet, a well-marked plant growing in Guiana and North Brazil. Specimens of a thick woody root, marked *Abutua grande* or *Parreira Brava grande*, and attributed to this species have been sent to me by Mr. Correa de Mello; they exhibit numerous concentric layers traversed by very distinct, dark medullary rays, the inter-radial spaces being white, and rich in starch. It is apparently a well-marked sort, and one I have not seen in commerce. ⁽¹⁶⁾

In conclusion I strongly advocate returning to the use of the root of *Chondrodendron*, which is the drug on which the reputation of *Pareira Brava* was originally founded.

In Brazil this root is regarded as the legitimate sort, and is still held in the highest esteem.

Though it has not been clearly recognized by European writers, is not altogether unknown. Guibourt ⁽¹⁷⁾ seems to have been acquainted with it and even correctly surmised its botanical origin. It is the root figured by Göbel and Kunze, ⁽¹⁸⁾ and there is an old specimen of it in the Pharmaceutical Society's Museum marked *Pareira Brava*. I myself met with it in the market in 1862. Lastly Dr. Squibb has pointed out ⁽¹⁹⁾ that some small lots of *Pareira Brava* imported into New York in 1871 consisted in large part of a drug entirely different from any previously seen, and that he at first supposed it an adulteration; but that subsequent examination had shown him that the drug in question agreed well with the older descriptions of *Pareira Brava*, and especially with Pomet's figure, so that he was convinced it was true *Pareira Root*. From Dr. Squibb's description I feel sure that the drug before him was the same as that to which I have called attention in the present paper.

There can be no doubt that it would become plentiful if the demand should arise, and that it would advantageously replace the worthless kind now found in the drug trade.

(1) This fact was first pointed out in the *Pharmacopoeia of India*, 1868, p. 8, note.

(2) *Hist. de l'Acad. Royale des Sciences*, année 1710, 56.

(3) Id.

(4) Helvetius, *Traité des Maladies les plus fréquentes et des remèdes spécifiques pour les guérir*, Paris, 1703, 98.

(5) Sloane MS., No. 3340, p. 291. - The letter has already been published in *Phil. Trans.*, No. 346, Nov. and Dec., 1715, p. 365.

(6) Sloane MS., 3340, p. 306.

(7) As proved by the letters of approbation which precede it. But it was not published until 1694.

(8) Tom. II. (1741) 21.

(9) Hill judiciously remarks that this is going too far in its praise, and yet omitting some of its real virtues. "It is certainly a diuretic," says he, "of no inferior kind, and has done great service in nephritic cases; and in plurisies and quinzies has been attended with more success than almost any medicine we know of singly. In suppressions of urine scarce anything is more efficacious or more instantaneous in its effect, but it is folly to infer from this that it will dissolve the stone. . . In cases of ulceration of the kidneys or bladder, when the urine is purulent and voided with great difficulty, there is scarce anything equal to this root as a remedy." - *Hist. of Mat. Med.* 1751. p. 600.

(10) Sloane MS., 4045, fol. 240.

(11) Mr. Miers (*Contributions to Botany*, III., 307) contends for this name being written *Chondrodendron* as more in accordance with its derivation from $\chi\acute{o}\nu\delta\rho\acute{o}\varsigma$. But I think it safer to retain the original spelling as accepted by all botanists.

(12) *Plantes Usuelles des Brasiiliens*, pl. 42.

(13) Martius, *Flor. Bras.* fasc. 38, tab. 48. Eichler makes *two* species under the name of *Botryopsis*, Miers eight, six of them being apparently forms of *Ch. tomentosum*. Mr. Miers's species, as named by himself, can be seen in the British Museum, and a type-specimen of the plant figured by Eichler in the Kew Herbarium.

(14) Tom. X, tab. 140. Mr. Miers regards this to represent his *Abuta macrophylla*, a very different plant.

(15) In Portuguese the word is written *Parreira*, and signifies a vine that grows against a wall or over an arbour. *Párria* is a vine-leaf.

(16) When Aublet was in Guiana, 1762-64, the stems of *Abuta rufescens* were shipped to France as *Pareira*

Brava blanc. He says there is a variety of the same with the woody parts reddish, which is known in Cayenne as *Pareira Brava rouge*. He also describes and figures a plant he calls *Abuta amara* or *Pareira Brava jaune*, which has the wood yellowish and very bitter.

This last is, I think, identical with the yellow wood of which, as I have said, there is a quantity now on sale as "*Pareira Brava*."—See *Hist. des Plantes de la Guiane Française*, i. (1775), 618-21, tab. 250-51.

(17) *Hist. des Drog.*, ed. 4, iii. (1850) 671.

(18) *Pharm. Waarenkunde*, ii. (1830-34) tab. 13, fig. 1, b-c

(19) *American Journal of Pharmacy*, March 1, 1872, 107.

(Daniel Hanbury, On Pareira Brava, The Pharmaceutical Journal and Transactions, 3. series, vol. 4, London 1873-1874, p. 81-83, 102-103)

Die Familie der Mondsamengewächse - Otto Warburg 1921

„Die Familie der Menispermaceae oder Mondsamengewächse umfasst etwa 260 Arten, fast ausschließlich Gewächse wärmerer Gegenden, größtenteils holzige Schlingpflanzen mit wechselständigen, handförmig-genervten, zuweilen gelappten Blättern. Die meist in achselständigen Trauben stehenden Blüten sind fast ausnahmslos klein und eingeschlechtig, die Quirle der Blütenteile sind in der Regel dreigliedrig. Entweder besteht die Blütenhülle aus vier derartigen Quirlen, von den zwei auf den Kelch, zwei auf die kleinere Blumenkrone fallen, oder letztere fällt aus; die Staubblätter stehen gleichfalls in zwei Kreisen, seltener sind sie zahlreich, häufig sind die Staubfäden zu einer achsenartigen Säule verwachsen; die Staubbeutel öffnen sich mit Spalten. Die oberständigen freien Fruchtblätter, in der Regel drei, sind einfächerig und enthalte eine, zuweilen zwei, halbumgewendete, an der Bauchnaht hängende Samenanlage; sie entwickeln sich zu kleinen Steinfrüchten, die dadurch, dass der Rücken stärker wächst, häufig nierenförmige Gestalt erhalten, wobei die Spitze nahe der Basis liegt. Oft entwickelt die harte Schale der Frucht (Endokarp) Auswüchse in den Samen hinein. Gewöhnlich enthalten die Samen ein zuweilen zerklüftetes Nährgewebe sowie gekrümmte Keimlinge. Sehr charakteristisch ist die Lianenstruktur des Holzes der meisten Arten, die sich in breiten Markstrahlen, schwach verholzten Zellwänden und mehreren gewöhnlich ziemlich konzentrischen Kambiumringen offenbart; diese entstehen durch Aufhören der Zellteilung in dem alten Kambiumring und Entstehung eines neuen in der Rinde. Oft treten lange, reihenweise stehende, mit gelblicher, harzartiger Masse gefüllte Zellen in Rinde und Mark auf.

Die Verwandtschaft dieser Pflanzen mit den Berberidazeen ist zwar deutlich, doch bilden die mehrzähligen Fruchtblätter, die einzelnstehenden Samenanlagen sowie die Steinfrüchte wesentliche Unterschiede von ihnen, letztere beiden auch von den Lardizabalazeen.

Die über 80 artenarmen Gattungen sind fast sämtlich nur auf einen Kontinent beschränkt, einzelne greifen von Südasien nach dem tropischen Australien über oder erstrecken sich westlich bis Afrika (z. B. *Tinospora*), *Menispermum* bewohnt das gemäßigte Asien und Nordamerika, *Cocculus* sowie *Cissampelos* Asien, Afrika und Amerika. Es ist eine alte Familie, die in der Tertiärzeit sogar Grönland und schon in der Kreidezeit Nordamerika bewohnte und heute im großen und ganzen die Geschieke des tropischen Waldgebietes teilt, wenngleich manche Gattungen sich an lichtere Orte (*Stephania*, *Cissampelos*, *Pericampylos*) gut angepasst haben und daher der Familie den Bestand auch für die Zukunft sichern. Der Nutzen der Familie beruht im Wesentlichen auf den ihr entstammenden medizinisch wirksamen Stoffen, die auf die Verdauungsorgane (Bitterstoffe) oder auf die Nierensekretion wirken. Manche Früchte enthalten fischbetäubende Mittel und Giftstoffe. Als Zierpflanzen benutzt man wohl nur die *Menispermum*-Arten, wenngleich für Gärten warmer Länder diese Familie gewiss zahlreiche schöne Laubenpflanzen mit großen rundherzförmigen Blättern abgeben könnte.

Von der Gattung *Menispermum* oder **Mondsamen** werden bei uns der **Kanadische Mondsamen**, *M. canadense*, mit fünf- bis siebenlappigen Blättern, und der **Sibirische Mondsamen**, *M. dahuricum*, mit gewöhnlich dreilappigen Blättern und längeren männlichen Rispen, als

Laubenbekleidung kultiviert. Die Gattung *Cocculus* enthält auch aufrechte strauchige Formen mit schmalen bis linealischen Blättern. Aus den Früchten des von Indien bis zu den Kapverden in Steppen verbreiteten *C. pendulus* (*C. leaeba*) bereiten sich die Araber ein gegorenes Getränk. Die einen giftigen Bitterstoff, **Pikrotoxin**, enthaltenden, besonders als Fischbetäubungsmittel in Südasiens viel verwendeten und zuweilen, namentlich früher in England, bei der Bierbereitung als Hopfenersatz missbrauchten **Kokkelskörner**, *Fructus Cocculi*, auch **Fischkörner** genannt, stammen von *Anamirta cocculus*. Die Früchte von *Pachygone ovata* dienen auf den Philippinen sogar zur Vergiftung der Krokodile, mehrere Menispermazeen Südamerikas werden gegen Schlangenbiss verwendet. Auch bei der Herstellung des gefürchteten Pfeilgiftes **Curare** der südamerikanischen Indianer spielt diese Familie, besonders die Gattung *Abuta*, eine Rolle.

Unter den Namen **Pareira** sind südamerikanische Drogen bekannt, die als Diuretikum und gegen Blasenleiden verwendet werden; es sind Stücke der Wurzelstöcke oder Stämme verschiedener Menispermazeen. Die **echte**, bis dreifingerdicke **Pareira brava** stammt von *Chondrodendron tomentosum*, einem brasilianisch-peruanischen Schlingstrauch, der Pelosin enthält, einen wahrscheinlich mit Buxin identischen Stoff; von Arten der Gattung *Abuta* stammen die **Gelbe** und **Weiß Pareira**, während eine **falsche**, nur federkieldicke **Pareira brava** von der in den ganzen Tropen im Sekundärbusch häufigen *Cissampelos pareira* abstammt. Die als Dysenterie- und tonisches Bittermittel benutzte **Kolumb-** oder **Colombowurzel** stammt von der ostafrikanischen *Jatropha palmata*, sie enthält einen Bitterstoff (Columbobitter), ferner Berberin und Colombosäure sowie gelbfärbende Substanzen; die **Falsche Columba**, das gelbe Holz des indischen *Coscinium fenestratum*, dient als Magenmittel. Auch als Fiebermittel werden verschiedene Menispermazeen, besonders der Gattung *Tinospora*, verwendet, der gelbe Farbstoff mancher Arten, z. B. in China der von *Fibraurea tinctoria*, dient zur Herstellung einer gelben Farbe.“

(Otto Warburg, Die Pflanzenwelt, Bd. 2, Leipzig und Wien 1921, Menispermaceae oder Mondsamengewächse, S. 28-31)

Frühere Erfahrungen / Former Experiences

Übersicht / Overview

1741 - Von der amerikanischen Grieswurzel - Etienne-François Geoffroy

1938 - Von der Wirkung der Grießwurzel - Gerhard Madaus

1741 - Von der amerikanischen Grieswurzel - Etienne-François Geoffroy

"Die amerikanische Grieswurzel, Butua & Pareira brava, *Offic.* & *P. Pomet*, Boutova & Membrocq *Brasiliens*. Pareira brava *Lusitan*. Butua, Brutua, Zanon & forte Ambutua *R. P.* Jo. Anton Montecucoli, *Ejusd.* ist eine holzichte, harte, gewundene Wurzel, auswendig braun, rauh und mit langen und zirkelförmigen Runzeln versehen, wie die Wurzel der Thymelea; innwendig dunkelgelb, mit verschiednen holzichten Zäsern; so daß, wenn man sie quer durchschneidet, viele concentrische Zirkel zum Vorschein kommen, welche durch viele, vom Mittelpunkte bis zum Umfang fortgehende Zäsern abgeschnitten werden. Sie hat keinen Geruch, schmeckt ein wenig bitter mit einiger Süßigkeit, wie die Süßholzwurzel, und ist eines Fingers oder zuweilen eines Kinderarms dick.

Die Portugiesen bringen diese Wurzel aus Brasilien und sagen, daß ihre Pflanze eine Art von wildem Weinstock sey. Noch kein Schriftsteller, nicht einmal Piso, hat sie beschrieben, wenigstens nicht unter diesen Namen, ausgenommen Zanoni, welcher eines gewissen Holzes, Butua, Brutua & Ambutua genannt, Meldung thut, allein sehr dunkel und ungewiß. Indeß kann das, was er davon sagt, mit unsrer Wurzel übereinkommen.

Die Brasilienser und Portugiesen erheben die Tugend dieser Wurzel aufs höchste: sie treibt den Urin, löst den Stein auf, dient in Wunden, ist Herz- und Magenstärkend, ein alexipharmacum: und kurz, sie halten sie für die größte Panacee. Die Brasilienser pflegen dieselbe mit Wasser angefeuchtet auf einem Wetzsteine zu Brey zu reiben, und sie hernach mit Wasser oder Wein verdünnt den Kranken zu geben, oder den kranken Theilen, entweder allein, oder mit etlichen Ölen vermischet, aufzulegen. Innerlich eingenommen, hemmt sie den Durchfall, die Dysenterie, die Gonorrhoe, den weißen Fluß, die Blutstürzung und andre Blutflüsse. In dem Seitenstechen und in der Bräune wird sie sowohl innerlich eingenommen, als auch in Form eines Breyumschlages dem schmerzhaften Theile aufgelegt. Sie hilft wider innerlich genommene Gifte, wider den Biß giftiger Thiere und wider die Wunden von vergifteten Pfeilen. Vornehmlich aber wird sie in der Nierencolik, in zurückgehaltenem Urin und wider den Nieren- und Blasenstein vor ein großes Specificum gehalten.

In der That habe ich dieses Mittel in der Nierencolik und im zurückgehaltenen Urin öfters mit glücklichem Erfolge gegeben, und bisweilen habe ich den Kranken fast augenblicklich, durch häufig erfolgten Abgang des Urins von seinen Schmerzen befreyt gesehen. Doch weit gefehlt, daß ich glauben sollte, es könne durch diese Wurzel ein Stein aufgelöset werden, welcher in den Nieren oder in der Blase zusammen gewachsen ist und verhärtet worden; obgleich nach dem Gebrauche dieses Mittels vieler Sand oder auch kleine Steine mit einer großen Menge Urin weggehen. Allein die Art dieses Mittels zu wirken scheint mir darinnen zu bestehen, daß es die schleimichte und zähe Lympham verdünnet und zertheilt. Wenn also die Nierencolik oder die Zurückhaltung des Urins von einer schleimichten Lympha herrühret, welche die erste Materie des Grießes und Steines und die Absonderungswege in den Nieren verstopft, oder wenn sie von der Zusammenhäufung des Grießes entsteht, welcher vermittelt dieses Schleimes vereinigt geworden, und sich nach und nach zu einem Steine verhärtet hat; alsdenn öffnet die amerikanische Grieswurzel, indem sie diesen Schleim auflöset, die Uringänge, und treibt den zertheilten Grieß mit häufigem Urine fort.

Ich habe mehr als einmal die Wirksamkeit dieser Wurzel bewährt gefunden, die Geschwüre der Nieren und der Blase zu reinigen und zu heilen; da der verschleimte und eiterige Urin kaum abfließen wollte und nicht anders als mit der größten Beschwerlichkeit gelassen wurde. Die Kranken wurden durch den Gebrauch der amerikanischen Grieswurzel von der Beschwerlichkeit den Urin zu lassen oder von dessen gänzlichen Zurückbleibung sehr bald befreuet, der Urin ging häufig und wäßrig ab, das Geschwür wurde gereinigt und gänzlich geheilt, indem man ein wenig Copaiva-Balsam mit dieser Wurzel vermischte.

Weil ich nun in der Amerikanischen Grieswurzel die Kräfte, das zähe und verschleimte Serum zu zertheilen, erfahren hatte, so bewog mich solches, dieses Mittel auch in andern Krankheiten, die von dem verschleimten und zähen Sero entstehen, zu gebrauchen. Zum Exempel, in einer Engbrüstigkeit, die von einem verdickten Schleime herrührte, welcher die Luftgefäße in den Lungen verstopfte und den Kranken fast erstickte, habe ich das Infusum dieser Wurzel mit so guter Wirkung gegeben, daß der Auswurf sehr häufig erfolgte, wodurch der Kranke gesund wurde; da vorher alle andre Mittel vergebens gebraucht worden waren. In einer Gelbsucht, die von einer dicken und klümperichten Galle verursacht worden, wollte ich dieses neue Hilfsmittel auch versuchen; und meine Hoffnung betrog mich nicht. Eine Frau hatte einen heftigen und stechenden Colikschmerz unter der Leber im rechten Hypochondrio; die Haut wurde innerhalb weniger Stunden ganz gelbe; die Stühle waren weiß, der Urin aber dick und saffrangelb: nachdem man ihr sowohl am Arm als am Fuße zur Ader gelassen, so ließ ich sie binnen einer halben Stunde drey Gläser vom Decocto der amerikanischen Grieswurzel nehmen: kurz, nachdem sie das dritte Glas ausgetrunken, ließ der Schmerz nach. Als hernach alle vier Stunden dieser Trank wiederholt worden, so erfolgten gelbe Stühle, der Urin ging viel häufiger, hell und weniger gelb: endlich verschwand die gelbe Farbe der Haut, und die Kranke wurde völlig wieder hergestellt. Weil sie aber dieser Krankheit öfter unterworfen ist, so bedient sie sich, so oft sie von derselben angegriffen wird, eben dieses Mittels, und wird wieder gesund. Vergebens habe ich mit dieser Wurzel eine Gelbsucht heilen gewollt, womit eine Frau beladen wurden, deren Leber aufgeschwollen, hart und scirrhus war. In der Gonorrhoe dienet die amerikanische Grieswurzel auch, das Geschwür zu reinigen und zu heilen, wenn sie mit Copaiva-Balsam vermischt wird. Die Dosis dieser Wurzel ist von zwölf Gran bis zu einer halben Drachme in Substanz, im Decocto aber bis zu zwey oder drey Drachmen.

Man muß sich in Acht nehmen, daß man nicht eine allzu große Dosis gebe; denn sie würde Brennen in den Nieren und vielleicht eine Entzündung erwecken."

(Etienne-François Geoffroy, Abhandlung von der Materia medica, Zweyter Theil, Von den ausländischen Pflanzen, Leipzig 1761, Von der amerikanischen Grieswurzel, S. 31-37 - Übersetzung des 1741 in lateinischer Sprache erschienen Werks Tractatus de Materia Medica.)

1938 - Von der Wirkung der Grieswurzel - Gerhard Madaus

"Nach v. Haller ⁽¹⁾ wird der Grieswurzel mildernde, krampfstillende und treibende Kraft zugeschrieben, und Hecker ⁽²⁾ hält das Mittel bei Hydrops, Ikterus und Fluor albus für dienlich. Er erwähnt auch, daß Helvetius es als Spezifikum bei allen Nieren- und Blasenkrankheiten nannte, daß es jetzt aber außer Gebrauch sei.

Michael Brandt ⁽³⁾ hat von der Wurzel recht guten Effekt bei Steinleiden gesehen. "Die Nieren aber von dem Sand zu reinigen, und zu befreien, kan nur im Anfange, da das Übel noch neu ist, durch nichts bessers gehoben werden als durch die Wurzel, Barera Brava, genannt, welche gekocht, und anstatt des Thees alle Morgen muß getrunken werden."

Hufeland ⁽⁴⁾ veröffentlicht eine Mitteilung des Hofrats Löffler, der das Mittel mit Erfolg gegen rheumatische Schmerzen verordnete.

Clarus ⁽⁵⁾ berichtet über den Gebrauch der Wurzel in ihrem Mutterlande und in England bei Katarrhen der Urogenitalorgane, Pyelitis, gegen Katarrhe der Respirationsorgane und als Diuretikum ähnlich der Uva ursi.

Als Hauptindikationen gibt Potter ⁽⁶⁾ chronische Cystitis, eitrige Nierenerkrankungen und Gonorrhöe an.

Brockhaus ⁽⁷⁾ erzielte gute Erfolge mit Pareira brava bei Prostatahypertrophie.

Die Homöopathie ⁽⁸⁾ bedient sich ihrer bei schmerzhaften Blasenleiden (Harndrang mit Schmerzen in der Eichel, Harnzwang heftigster Art), veraltetem Blasenkatarrh, Prostatahypertrophie und Nierenkolik.

Infolge ihres Gehaltes an den Alkaloiden Berberin, "Alkaloid" B 4 ⁽⁹⁾ und Chondrocin ⁽¹⁰⁾ wirkt die Wurzel wahrscheinlich ruhigstellend auf die glatten Muskeln der Harnwege, wodurch sich ihre Verwendung als Mittel gegen Cystitis, Beschwerden infolge Urolithiasis und als Diuretikum erklärt ⁽¹¹⁾.

Sie soll auch laxierend wirken ⁽¹²⁾.

Anwendung in der Praxis auf Grund der Literatur und einer Rundfrage: Pareira brava ist bei Erkrankungen der Urogenitalorgane indiziert. Im einzelnen verordnet man die Gießwurz bei chronischer und akuter Cystitis mit ständigem Tenesmus vesicae und Harnzwang (Urin dick, schleimig und scharf), bei Blasen- und Nierensteinen, Nierenkoliken, Harndrang mit Schmerzen bis in die Oberschenkel, Pyelitis calculosa (hier von Donner, Berlin, als eines der besten Mittel gerühmt), Urethritis, Aszites, Prostatahypertrophie, Prostatitis, Gonorrhöe und Fluor albus. Auch bei Asthma und von F. H. W. Schmidt bei Leberverhärtung der Alkoholiker wird sie genannt."

(1) v. Haller, Medicin. Lexicon, 1755, S. 1108.

(2) Hecker, Pract. Arzneimittell., 1814, Bd. 1, S. 194.

(3) Michael Brandt, Glückliche Stein-Cur, Hamburg 1724.

(4) Hufeland, Journal, Bd. 21, I., S. 52.

(5) Clarus, Handb. d. spec. Arzneimittell., 1860, S. 1058.

(6) Potter, Mat. med., 1898, S. 374.

(7) Brockhaus, Biol. Heilkunst 1932, Nr. 50.

(8) Clarke, A Dict. of pract. Mat. med., Bd. II, S. 721; Stauffer, Klin. hom. Arzneimittell., S. 748; Schmidt, Lehrb. d. hom. Arzneimittell., S. 240; Heinigke, Handb. d. hom. Arzneiwirkungsl., S. 491.

(9) Faltis, Monatsh. Chem. 1912, Bd. 33, S. 873.

(10) Scholtz, Arch. Pharm. 1911, Bd. 249, S. 408.

(11) Wasicky, Lehrb. d. Physiopharm., S. 711.

(12) vgl. (5)

(Gerhard Madaus, Lehrbuch der biologischen Heilmittel, Bd. 3, Leipzig 1938, Pareira brava, S. 2059-2060)
[Leicht gekürzt]

Heilungen / Cures

Übersicht / Overview

1855 - A man aged 68 suffered awful pains on passing urine - Dr. Hastings

1870 - Catarrh of the bladder in a man of 60 years - A. H. Hull

1875 - Un médicament empirique contre les coliques néphrétiques - Dr Turrel

- English Translation by J. Compton Burnett

1883 - A woman could not pass urine in any position except on her knees since her confinement two weeks ago - W. J. Martin

1885 - Notes on Pareira brava - C. M. Foss

1886 - Neuralgia of the bladder

1855 - A man aged 68 suffered awful pains on passing urine - Dr. Hastings

"The next case which I intend to direct the attention of your readers to, is of a more serious nature, and, in my opinion, highly interesting.

The gentleman has been constantly under my care for the last eighteen months, and has been subject to chronic catarrh of the bladder for years. Allopathic treatment failing to afford him any relief, he gave it up, and placed himself under my care. The nature of this case is this:

He suffers severe pains, at times in the back and bladder, with painful retraction of the left testicle; pain in the thigh extending down to the big toe and sole of the foot; frequently there is an irritable eruption on the legs, and great irritation of the scalp; the urine passes with great difficulty; he feels a great desire to pass it, and fancies that quarts of it will come away, but finds the greatest difficulty to get any to pass, notwithstanding the severe pressive pains which attend it. So awfully severe are these pains, that he is obliged to get down on his knees, press his head firmly against something, and remain in that position, forcing until he sweats profusely, "and roars like a bull," to use his own expression. After remaining in this situation for ten or twenty minutes, the urine dribbles away with great pain and frequent stoppages, scalding and lacerating at the point of the penis. It has a strong ammoniacal smell, and is loaded with a thick tenacious mucus. These paroxysms generally occur from three to six o'clock every morning. During the day he is comparatively easy. The bowels are generally regular. His age is 68 years, and has been a very regular and temperate man all his life. Never had either syphilis or gonorrhoea. He is in no profession or trade, but lives privately.

Fearing that he had enlarged prostate, stricture or stone in the bladder, I sounded him frequently, and used bougies, but could detect nothing further than a cartilaginous condition of the inner coat of the bladder, which felt very hard to the sound. In this opinion, I was confirmed by Mr. Fowler, who kindly examined into the case with me. For upwards of twelve months, I tried every homoeopathic remedy, viz., Cubeb, Canth., Cann. sat., Uva ursi, Nux, Sulph., Merc., Puls., Tereb., &c., with Nitric acid injections, as recommended by Sir B. Brodie, together with Sitz-baths, abdominal compresses, wet-sheet packing, but without curing him.

Certainly he derived more benefit from homoeopathic treatment than he did from allopathic, as the fact of his remaining so long under my care will testify. The patient was going on, much as usual, up to the 26th July, when our town was visited with one of the most awful floods in the memory of the oldest inhabitant, and my patient's house happened to be one of those which was completely inundated, the consequence was that he got his feet and legs wet, and the result was inflammation of the kidneys and bladder. I need not detail the treatment of these complaints, suffice it to say, that with Aconite, Belladonna, Mercurius, Cantharis, &c., they entirely disappeared by the 10th of August, or in about eight days after their first incursion.

During the time he suffered from these, the ammoniacal smell, thick, tenacious and ropy mucus of the urine disappeared, and he even passed it with greater ease than usual. But by the 10th the old symptoms set in again, the urine smelled again, became loaded as usual, and he passed it with great difficulty, accompanied by the common paroxysms, every morning. I now prescribed Bals. Cop., mane nocteque, but with no avail. He was still unable to leave his bed, and was very much troubled with night perspirations, and hammering and buzzing noises in the head. I now gave him China, which effectually checked his perspiration, and relieved his head, but had no perceptible effect upon the urine.

All the proved homoeopathy medicines, known to have an influence on the kidneys and bladder, having been hitherto tried, in all forms and in all doses, I had prepared sometime ago a mother tincture of Pareira brava, so highly recommended by Sir B. Brodie in these cases, and although I was aware that to prescribe it thus was acting empirically, it not having been proved, I nevertheless resolved to try it, and accordingly on the 17th inst. I gave him the first dose, prepared as follows - ten drops of mother tincture to six ounces of water, *succussed violently*, a table-spoonful to be taken night and morning.

On the second night after having begun it, he had, early on the following morning, a terrible paroxysm in endeavouring to void his urine; "something white came away," he said, and after that he passed his urine comparatively well and easily. On examining the urine the following morning, it was neither acid nor alkaline, nor did it smell much; quantity greater than usual, and a thick, tenacious, whitish mass lay at the bottom of the vessel. Specific gravity was 20. No medicine next two days, during which time he progressed most favourably.

21st. - Mucus appeared again in the urine, but scarcely any pain in passing urine. No paroxysms in the morning. Former medicine repeated. Bowels rather obstinate, but a dessert-spoonful of castor oil, occasionally, together with simple enemas of warm water, keep them regular.

22nd. - Good night; sat up two hours to-day - first since attack. Continue medicine.

23rd. - Progressing favourably; came down stairs to-day, and remained up for eight hours. Medicine to-night, omit it tomorrow morning.

24th. - Doing well; recovering so rapidly, that he was driven out in his carriage for two hours to-day. No medicine.

25th. - Considerably perspiration last night; urine abundant, and passed easily; no mucus. Pareira brava to-night.

26th. - Very little perspiration last night; no pain in urinating, and no mucus in urine. Doing well. Pareira brava to-night.

27th. - Quite comfortable.

Ten days having now elapsed since I first prescribed the Pareira brava and during that time the patient having continued to progress most favourably, all his former pains, &c. having nearly disappeared, I think we may safely infer, that this improvement is due to the Pareira brava. It cannot be, that the inflammation of the bladder had any influence in checking the catarrh, as we find that on the 10th the discharge of mucus was as copious as formerly.

It may perhaps be advisable to state that the mother tincture was made from the root of the Pareira brava."

(Dr. Hastings, M.R.C.S., L.S.A., Cheltenham, Cases of gleet, and inflammation of the kidneys and bladder, treated by Agnus and Pareira brava, The British Journal of Homoeopathy vol. 13 (1855), p. 591-594)

1870 - Catarrh of the bladder in a man of 60 years - A. H. Hull

"In April, 1869, was called upon by Samuel Crane, a temperate man of sixty years, who complained of the following symptoms: Frequent and irresistible desire to pass the urine, with constant pain at the neck of the bladder, burning and smarting at the end of penis - dark, ropy and scanty urine, urinous breath, dark-brown tongue, headache and loss of appetite. This state of things had been present for several weeks - he having been treated allopathically without benefit. - I gave Cantharides, 3d, every hour with immediate and entire relief; he continued, as he called himself cured, for about three weeks, when he again visited me with the same symptoms, and the prescription previously given was repeated and re-repeated with but partial relief.

I now prescribed Uva ursi, half an ounce of the leaves to a quart of warm water, made into an infusion; of this he took half a teacupful every four hours. After a few doses he rapidly improved, and in three or four days was quite recovered.

I saw no more of this man until December of the same year, when he visited me one cold raw day, complaining of his same old trouble with aggravations; he was unable to void any urine without the aid of a catheter, and the desire to urinate was so frequent, that he was unable to obtain any rest either night or day, was worse at night; and the symptoms which he had previously suffered from were now accompanied with obstinate constipation with a desire to pass urine and faeces at the same time, but a total inability to pass either; this distressing state of things continued for some time without relief. In order to move his bowels he took, upon his own responsibility, some Citrate-of-Magnesia, which had the desired effect for a day or so, but soon the virtue was lost. I gave Cantharides, Uva-ursi, Phosphorus, Hyoscyamus, Rhus-tox., Bellad., Chimaphila, Buchu, and a host of remedies, enough certainly to have cured almost anything - with but little, if any benefit. At this point, I gave Opium, 6th, with relief, especially of the constipation and wakefulness. The urine was so offensive that its odor would permeate the whole house, it was a dark, bloody, stringy-looking mass; the desire to urinate occurred as often as once in fifteen minutes, and at this time the pain was so great that great drops of perspiration would ooze out of the sufferer, and his cries for help were painful to listen to.

It seemed to me at this time that the bladder must be very much reduced in size, and the inner surface was corrugated and shrunken; that the prostate gland was greatly enlarged and inflamed, as it was almost impossible now to pass a catheter, and when passed, I could not obtain more than half a tea-cupful of urine; what did come seemed to come all at once.

By accident I found that Mr. C. had been using the Uva-ursi all summer as I had first given it, and from this I drew the conclusion that he now labored under the pathogenetic influence of the drug.

I took fifteen grains of the Muriate of Hydrastin and dissolved it by adding thirty drops of dilute Muriatic-acid and six ounces of boiling water, percolated through filtering paper. Of this I took two drachms to a pint of warm water and injected into the bladder, allowing it to remain about one hour, and then drew it off. I repeated this operation twice per day, with decided improvement, as far as the desire to micturate was concerned, and also as to the quality of urine. This plan was followed up for two days with almost complete recovery; but he had another relapse from taking a sudden cold. This time the Hydrastin failed to aid him. I now gave Pareira brava, thirty drops tincture in half a glass of water; two tea-spoonfuls every hour. This medicine operated astonishingly; within a few hours from the time of taking the first dose, his symptoms had nearly all disappeared; the urine cleared up at once, and has remained so for several weeks. The old gentleman is now quite able to attend to his affairs. I will add, that in this case the patient had previously suffered from bronchial catarrh, but has had none of it since the first attack in the bladder. I called this a case of catarrh of the bladder, because the

urine did not contain the phosphates which clear up by the application of heat, nor did albumen deposit by the application of heat and nitric acid: - there were no epithelial casts from the tubuli, nor was there any indication to my mind of renal disturbance.

My object in presenting this case at all, is, to bring prominently before the profession the use of Pareira brava, in similar cases. I am confident it is unsurpassed when indicated."

(A. H. Hull. M.D., Chicago, Ill., Catarrh of the Bladder, The North American Journal of Homoeopathy vol. 18 (1870), p. 491-493)

1875 - Un médicament empirique contre les coliques néphrétiques - D^r Turrel

"La loi de similitude nous fournit un précieux criterium pour l'emploi de certains remèdes, qu'une notoriété plus ou moins légitime a rendus populaires. On trouve en effet, chez tous les peuples, surtout chez ceux qui vivent en contact incessant avec la nature, des spécifiques contre les maladies graves et réputées incurables.

On sait avec quel dédain la médecine officielle accueille ces ressources quelquefois très-précieuses, qu'un empirisme fortifié par la tradition offre à la thérapeutique. Si elle y recourt, en désespoir de cause, c'est à contre cœur, et en rougissant de sa défaillance momentanée. Cette attitude s'explique par les préjugés et les erreurs qu'elle accrédiète dans son enseignement sur le traitement des maladies.

Toute autre est la pratique du médecin guidé par la loi de Hahnemann. Il estime que si les remèdes, dont la pathogénésie a été méthodiquement vérifiée, guérissent en vertu de la similitude, les agents non encore étudiés, lorsqu'ils modifient certaines formes morbides, n'ont pas d'autre manière d'agir. Il fait donc légitimement honneur à la doctrine de Hahnemann, de ces cures rapides et merveilleuses que les empiriques savent parfois procurer. Aussi, considère-t-il provisoirement, les résultats obtenus comme des valeurs pathogénétiques, et n'hésite-t-il pas à les utiliser au besoin. Il les contrôle ensuite par la méthode expérimentale, qui seule peut lui fournir des données précises de thérapeutique par les expressions symptomatiques qu'elle lui permet d'enregistrer.

Une autre source de renseignements a mis en lumière des modificateurs d'une singulière énergie.

L'observation fortuite d'accidents produits par des agents perturbateurs met souvent en relief une série constante de phénomènes anormaux, qui justifient l'emploi méthodique de ces forces contre des maladies offrant des symptômes analogues. C'est ainsi que la constatation de l'érysipèle œdémateux, produit par la piqûre de l'abeille sur la peau extérieure et sur la muqueuse buccale, a révélé un précieux remède. Notre école l'emploie avec un succès constant contre l'érythème, l'érysipèle du réseau du Malpighi et l'angine œdémateuse. En outre, l'étude de ce venin a fait connaître, par les expressions pathogénétiques qu'elle a fournies, des indications thérapeutiques inattendues et d'une très-haute valeur.

C'est surtout des guérisons empiriques et des ressources qu'elles nous fournissent, que nous nous occupons dans cette note. Nous savons que nos confrères si laborieux des Etats-Unis d'Amérique, suivant la voie tracée par Hering, de Philadelphie, ont su emprunter aux remèdes populaires chez les Indiens, toute une pathogénésie nouvelle. Quelques brillantes que soient ces nouvelles conquêtes, hâtons-nous de dire qu'il ne convient pas de se laisser entraîner sur ce facile terrain sans une critique prudente. L'exemple du *Condurango* si prôné contre le cancer, si rapidement oublié, nous servirait au besoin de leçon. - Mais comme nous n'acceptons ces modificateurs nouveaux que sous bénéfice d'inventaire, comme nous ne les préconisons que lorsqu'ils ont fait leurs preuves empiriques, et qu'à ce moment nous ne les tenons pas quittes de l'expérimentation pathogénétique, on comprend que nous sommes suffisamment prémunis contre l'engouement et l'infatuation.

Étant formulées ces réserves qui nous sont imposées par la rigueur de notre méthode, il nous a semblé utile de faire connaître ce que nous savons expérimentalement de quelques remèdes renommés, aux Antilles, dans l'Amérique méridionale et en Europe.

Le *Baume de Copahu* est réputé, à Porto-Rico, souverain contre l'asthme. N'oublions pas que l'asthme est un symptôme de plusieurs maladies qui diffèrent par leur siège et par leur nature. Il faut donc avoir recours à la pathogénésie; elle seule peut déterminer la véritable expression morbide qui sera du ressort du *Copaivae Balsamum*. Nous croyons devoir signaler à l'actif de ce nouveau remède son efficacité contre l'urticaire, contre la cystite du col de la vessie, résultant d'une métastase rhumatismale, et contre le catarrhe des bronches lorsqu'il s'accompagne de troubles fonctionnels du côté des voies urinaires.

Le *Lignum nephreticum*, bois de Coult, *Guilandina moringa* de la famille des légumineuses, est dans les Antilles françaises renommé parmi les nègres comme spécifique de la goutte. C'est aux révélations d'une vieille négresse, que l'on doit la connaissance de ce médicament, qu'une jalouse et mystérieuse tradition réservait à certains adeptes.

J'ai pu vérifier la remarquable efficacité du *Lignum nephreticum* pour atténuer les attaques de goutte, lorsque les articulations sont gonflées sans rougeur, et empâtées au point de rendre tout mouvement impossible ou fort douloureux.

Rappelons à l'occasion de la goutte, que ce Protée a une modalité très-variable; d'où la nécessité de vérifications pathogénétiques qui permettront une précision diagnostique suffisante des indications de cet agent.

Le *Frêne* de nos halliers et des forêts du centre de la France, fournit, par la décoction de ses feuilles et de son menu bois, un remède très-vanté contre les tophus goutteux et les fausses ankyloses des vieux rhumatisants. Avec ce médicament dynamisé, j'ai vu le D^r Chargé guérir une ankylose du genou avec contracture, qui depuis quelques années, empêchait la marche et occasionnait un trouble notable dans l'économie de la malade. Le D^r Chargé indique le *Fraxinus excelsior* contre la surdité d'origine goutteuse.

La *liqueur de Harlem*, remède empirique des Hollandais, s'est montrée d'une efficacité singulière dans les coliques néphrétiques, avec cheminement très-douloureux de calculs à travers les uretères et dysurie, ou même suppression complète de l'excrétion des urines. Je l'ai moi-même empiriquement administrée en dilutions et j'ai réussi à abréger de terribles crises de coliques néphrétiques.

On sait, par de récentes analyses, que cette *liqueur de Harlem* se compose des produits empyreumatiques de la combustion et de la distillation du bois et des baies du genévrier commun. Les études pathogénétiques réclamées pour cet agent devraient-elles se faire avec la teinture du genévrier ou avec la liqueur de Harlem? Telle est la question dont la solution n'est pas douteuse pour notre école, qui peut trouver dans ces deux préparations, deux agents thérapeutiques à propriétés différentes, bien que provenant d'une source identique.

Mais le remède le plus intéressant que j'aie à signaler aujourd'hui, c'est le *Pareira brava*, ou vigne vierge des Antilles. Voici comment j'ai été conduit à le connaître et à l'administrer.

J'étais depuis plus de vingt ans, le médecin d'un honorable industriel de Toulon, M. Lazare Imbert, qui a la plus grande confiance dans la méthode homoeopathique.

Ce client et ami était sujet à des coliques néphrétiques, et, pendant les dernières années de sa carrière commerciale, il eut souvent de violentes crises qui le clouaient au lit avec d'atroces souffrances, et se résolvaient ordinairement par l'expulsion d'un ou de plusieurs calculs. D'autres fois, il ne se montrait pas de véritables graviers, mais invariablement il y avait dysurie, ténésme vésical, urines sanguinolentes, et parfois vomissements.

Les coliques revenaient presque périodiquement, et malgré le traitement, s'accroissaient à certaines époques plus insupportables. M. L. Imbert prêta donc peu à peu l'oreille aux confidences de ses amis, atteints de la même maladie et vantant à qui mieux le spécifique dont ils se trouvaient bien. A l'un, la décoction de *Pois chiches* torréfiés avait réussi sans retour; l'autre avait eu recours avec succès à l'*huile de Harlem*, ce qui ne l'empêcha pas plus tard d'être opéré de la pierre par la lithotritie. Quoi qu'il en soit, mon client se procura cette huile, qui calma quelques-unes de ses crises; mais les échéances périodiques ne furent point pour cela supprimées.

Un médecin qui avait le premier à Toulon pratiqué l'homoeopathie et qui fréquentait le magasin de M. L. Imbert, lui conseilla, en 1868, de prendre 10 grammes de racine de *Pareira brava*, en décoction dans 3 verres d'eau, qui, réduits à 1 verre par une ébullition prolongée, serait pris le matin à jeun.

M. L. Imbert suivit ce conseil, et voici ce qu'il m'écrivit à ce sujet car il habite la campagne, où j'ai été le relancer pour préciser ses souvenirs:

"Je pris pendant quelque temps l'infusion conseillée par M. Daniel, et je m'en trouvais bien; lorsqu'un jour je fus pris d'une crise terrible. Vous fûtes immédiatement appelé; obligé de garder le lit pendant huit jours avec des souffrances, je mis au monde le plus beau caillou que j'aie fait de ma vie. Sachant l'usage que j'avais fait de la décoction de *Pareira brava*, l'idée vous vint alors de donner à M. Ferrat, pharmacien homoeopathe, une certaine quantité de la dite racine que j'avais coupée en très-petits fragments. Il en fit une teinture dont vous me donâtes un flacon. Je m'en suis servi depuis avec assez de succès pour améliorer mes souffrances.

Je crois que contre cette maudite maladie, il n'y a guère que ce remède, sinon pour la guérir, du moins pour y apporter de grands soulagements; mais je suis obligé de dire que l'*huile de Harlem* est aussi une excellente chose. J'use des deux alternativement."

J'ai tenu à citer textuellement les souvenirs de M. L. Imbert: mes confrères comprendront que j'ai été conduit à faire une préparation plus régulière du *Pareira brava* parce que j'avais cru que la décoction concentrée avait produit une aggravation homoeopathique. Je n'ai pu du reste m'expliquer que par des bizarreries et des prétentions à la singularité auxquelles, dans les dernières années de sa vie, le D^r Daniel s'abandonnait trop volontiers, l'oubli qu'il avait semblé faire de nos principes, en conseillant des doses massives non dynamisées.

Il était donc naturel que j'eusse recours à une préparation mieux équilibrée, d'une substance qui me paraissait digne d'être employée. C'est en l'administrant à doses infinitésimales, que je suis arrivé à cette conviction, que le *Pareira brava* est, contre les *coliques néphrétiques* occasionnées par les calculs uriques, le plus puissant modificateur. Mais je n'oublie pas que pour détruire la disposition morbide qui occasionne les coliques, il faut un traitement et surtout un régime. Or, M. L. Imbert, pas plus que les autres malades rhumatisants ou gouteux, n'eut ni le courage, ni la persévérance de se soumettre pendant les intervalles des crises à la diète homoeopathique. J'ai néanmoins la croyance que par son action élective incontestable sur les reins, le *Pareira brava*, modifiant la genèse morbide de l'acide urique, pourra être employé avec succès à combattre efficacement la goutte et le rhumatisme dont les coliques néphrétiques sont le plus capital symptôme.

Mais il faudrait soumettre ce précieux remède à l'expérimentation selon la méthode de Hahnemann. Il n'existe pas, en effet, de pathogénésie de cette liane des Antilles. Le peu que l'on en sait se trouve consigné dans la *Flore médicale* du D^r Descourtilz, ancien médecin du gouvernement à Saint-Domingue, imprimée en 1827. J'en extrais ce qui suit:

"Paire à feuilles rondes; Liane à feuilles en cœur; Pareira brava; Cissampelos butua, ou vigne vierge à bâtons, de la famille des ménispermées: croît aux lieux montueux du Brésil, de

Saint-Domingue, de Cuba, de la Martinique et des autres Antilles, où les nègres en font le plus grand cas comme remède et comme alexitère. On emploie la racine qui se donne en poudre, depuis un dragme jusqu'à deux gros. Trois gros suffisent pour deux litres d'eau qu'on fait réduire à moitié.

"Les vertus de cette plante, quoique contestées, n'en sont pas moins réelles et mille fois reconnues aux colonies, dans les néphrites calculeuses et les dyspnées. Elle divise évidemment les matières visqueuses qui engouent les bronches, et elle favorise l'exportation d'une manière prompte et sensible. On l'emploie aussi dans les gonorrhées, et pour arrêter certaines hémorrhagies. Ses feuilles appliquées sur les plaies et les ulcères, en accélèrent notablement la cicatrisation. Le jus de cette liane a la faculté de neutraliser incontinent les morsures des serpents venimeux. Sur cinq nègres mordus par des serpents et entrés à l'Hôpital de Saint-Pierre, (Martinique) trois furent guéris en employant le *Pareira Brava*. Les deux autres périrent en quatre heures de temps pour n'avoir pu le leur administrer. J'ai mille faits exacts et bien observés, que m'autorisent à publier la propriété de ce précieux don de la nature, observations faites dans tous les cas surtout où les moyens généraux, quoique rationnels, avaient échoué, et où la perte des malades était assurée, malgré la cautérisation pratiquée dans un temps opportun et dont cet antidote végétal triompha."

On voit par cette citation, que le praticien des Antilles, ne fermait pas volontairement les yeux à la lumière. Malgré sa déférence pour les moyens *généraux* et *rationnels*, Descourtiz acceptait les spécifiques; il les prônait, il semble qu'il ait entrevu la méthode expérimentale, ou du moins l'action élective des médicaments, si admirablement démontrée par Hahnemann, et aujourd'hui proclamée, même par les détracteurs du grand médecin.

Pour justifier l'estime que je fais du *Pareira Brava*, je publie quelques observations sur les résultats que j'en ai obtenus dans ma pratique.

PREMIÈRE OBSERVATION.

M. Saffret maître magasinier en retraite, âgé de 50 ans, demeurant rue Notre-Dame n° 5, me fait appeler le 9 mars 1871. Il est alité, souffre beaucoup depuis 17 jours de coliques néphrétiques qui ont commencé à se produire depuis un an, et m'apprend qu'elles reviennent à peu près tous les trois mois, de plus en plus longues et violentes. Il a rendu plusieurs fois des calculs uriques, et pendant ses campagnes, il a eu des atteintes de rhumatisme. Toutes les médications ayant été vaines, il a recours, en désespoir de cause à l'Homoeopathie.

Les urines sont rares, rouges, à sédiment briqueté. Dysurie, soif et constipation opiniâtre. Le malade supporte difficilement le lit, où cependant il est contraint de séjourner.

Je prescris *Pareira Brava* 3 potions 30° 24° 12°, une goutte de chaque dans 150 grammes d'eau distillée, à prendre alternativement d'heure en heure par cuillerées. Eau sucrée pour boisson.

Du 10 au 15 mars, les douleurs vont se calmant, la dysurie cesse, les urines deviennent abondantes et non sédimenteuses. Le repos au lit n'est plus désagréable, et le malade peut le 18, venir dans mon cabinet me demander s'il lui faut continuer un traitement, tant il se trouve dispos et rétabli.

J'engage M. Saffret à ne pas oublier ses rechutes et à me venir voir de loin en loin. Ma prescription est: *Pareira Brava*, 30° et 24° dil. une goutte 150 aq. stil. à alterner tous les matins à jeun.

Le 14 avril les urines continuent à être tout à fait limpides: *Pareira Brava* 24° et 12° *Ut suprâ*.

Le 1^{er} Juin à la suite d'un écart de régime (Tabac, liqueurs) et peut-être en raison de la périodicité précédemment constatée, mon malade se plaint d'une douleur sourde dans la région

lomulaire. Je lui donne *Pareira Brava*, teint, mère une goutte dans 150 gr. aq. stil à prendre de 4 en 4 heures. Je le revois le 15; il m'apprend que pendant sa potion, il a rendu beaucoup de petits graviers, presque sans douleurs. Je donne *Pareira Brava* 6^e et je cesse de le voir jusqu'au 1er juillet 1873.

Pendant cette longue période de 25 mois, M. Saffret n'a pas eu un seul accident, bien qu'il n'ait pas observé le régime imposé pendant les crises.

Ce jour-là, il s'est empressé de recourir à moi, parce qu'il a eu quelques douleurs lombaires, accompagnées de sédiment briqueté dans les urines. *Pareira brava* 30^e en eut raison en quelques jours. Je continue le 9 juillet par *Pareira brava* 24^e, et le 19 du même mois, par *Pareira brava* 12^e, le traitement dont les effets se prolongent encore aujourd'hui, 25 février 1875, puisque pendant vingt mois aucune nouvelle crise ne s'est produite.

Ce traitement a consisté uniquement dans l'emploi de ce seul et même remède, le *Pareira brava*, dont j'ai pu ainsi constater l'efficacité à toutes les dilutions, en partant de la teinture mère jusqu'à la 30^e. On remarquera dans cette observation, non-seulement le prompt soulagement procuré pour les souffrances provenant de la présence et du cheminement des calculs, mais encore l'atténuation progressive des crises, dont l'intensité et la périodicité ont été si heureusement modifiées.

DEUXIÈME OBSERVATION.

M. M., capitaine de frégate en retraite, 52, rue Picot, a longtemps souffert de rhumatismes. Consécutivement s'est développée une endocardite, caractérisée par le souffle aortique au premier temps, chocs douloureux à la région précordiale, et intermittences du pouls. (Rétrécissement de l'orifice aortique.) M. M. éprouve en montant une oppression excessive, et pendant longtemps, il avait de cruelles insomnies avec impossibilité de rester au lit. Ces symptômes ont été notablement améliorés par un traitement approprié, dans lequel arsenic et belladonne ont joué un rôle capital.

Le 19 janvier 1875, M. M. éprouve, vers deux heures du soir, des douleurs contusives à la région des reins. Il s'aperçoit avec inquiétude que ses urines sont rares, rendues avec un pénible ténesme, qu'elles ont une couleur rouge foncé, presque noirâtre, et qu'un dépôt briqueté se forme au fond du vase où elles séjournent. Les coliques néphrétiques vont s'accroissant de plus en plus, et vers huit heures du soir, elles deviennent si insupportables que M. M., qui a toujours une certaine appréhension du lit, se traîne chez moi, appuyé sur un ami, et fou de douleur, me supplie de le calmer. Je prescris *Pareira brava* 6^e une goutte dans 150 gr. d'eau distillée, à prendre par cuillerées à café, de cinq en cinq minutes, tant que les souffrances seront aussi intenses. - Je lui recommande d'espacer de plus en plus les doses, dès que les douleurs deviendraient moins cruelles.

Le 20, au matin, je vais voir mon malade, que je trouve au lit, calme et complètement soulagé; il m'apprend que dès les premières cuillerées de la bienfaisante potion, il s'est senti mieux. Mais il avait une telle appréhension du retour de ses atroces tortures, qu'il a, sans interruption, épuisé sa potion en en prenant toutes les cinq minutes, jusqu'à onze heures du soir. A partir de ce moment, un sommeil réparateur l'a calmé, et les urines, qui me sont montrées, sont redevenues claires et ont été rendues facilement et en plus notable quantité.

Ici l'effet du *Pareira brava* a été rapide et décisif contre une hémorrhagie des uretères, provoquée par le cheminement de petits calculs uriques; aucune récidive ne s'est encore produite depuis deux mois.

TROISIÈME OBSERVATION.

M^{me} la comtesse de P. S., au Grand-Hôtel, est depuis longtemps dans un grave état de marasme, dont le point de départ daté de la ménopause survenue il y a plus de dix ans. Vers cette

époque, elle eut une néphrite albumineuse qui fut traitée par des préparations arsenicales à doses allopathiques. La guérison fut proclamée par le médecin et l'albuminurie sembla conjurée, bien que la malade continuât à maigrir d'une manière inquiétante.

Il y à trois ans, M^{me} la comtesse de P. S. eut à Como une pneumonie grave, qui fut admirablement traitée et guérie par M. le Dr Bruni, de Milan, praticien de notre École, très-justement renommé pour le traitement des maladies de poitrine.

Appelé auprès de cette dame, je suis frappé d'abord du dépérissement qui se manifeste, et surtout de l'oppression si considérable dont elle souffre depuis sa pneumonie, au point que le moindre mouvement des bras, et quelques pas essayés, même dans l'appartement, amènent une suffocation presque syncopale. Elle ne peut, à *fortiori*, ni se mettre dans son lit sans aide, ni monter quelques marches d'escalier. Le sommeil est bon, mais seulement dans une attitude presque assise. Mais l'appétit est nul, bien que les digestions ne soient pas trop laborieuses.

Bien que Mme de P. S. ne tousse pas, et qu'elle n'ait jamais de sueurs nocturnes, les commémoratifs de la récente pneumonie, ont fait craindre une phthisie pulmonaire; en conséquence, je suis invité à procéder à un scrupuleux examen de la poitrine.

L'auscultation la plus minutieuse et la plus attentive de toutes les parties du thorax ne révèle aucun des signes caractéristiques de la présence de tubercules. La respiration est courte et haletante, mais ne produit aucun souffle pendant ses deux temps, J'en conclus que s'il y a un peu d'empâtement du tissu intercellulaire, il ne s'est point produit de néoplasmes hétérogènes, et que la maladie ne saurait être considérée ni traitée comme une phthisie pulmonaire.

Quelle était donc la nature de ce mal, qui avait pu produire une si profonde altération d'un organisme primitivement vigoureux?

Je portai mon attention sur les urines, en raison de l'albuminurie traitée autrefois et réputée guérie. Or, l'examen de ce produit me révéla le nœud de la situation. Une bonne analyse y démontra la présence d'une notable proportion d'albumine, avec des cellules d'épithélium et des tubuli, dénotant une grave altération des éminences mamelonnées; l'urine contient en outre des cristaux rouge-bruns d'oxalate de chaux, la quantité rendue, en 24 heures, et toujours sans douleurs, varie de un litre à 3/4 de litre.

Je diagnostique une néphrite parenchymateuse, et je prescris, le 19 décembre 1874: *Arsenic* 30, six globules dans un verre d'eau, à prendre par cuillerées trois fois par jour.

Le 25 décembre, je suis mandé en toute hâte auprès de la comtesse, qui depuis 3 heures, souffre d'une atroce douleur dans la région lombaire gauche. Cette douleur insolite, inattendue, est si violente, qu'elle désespère la malade qui appelle la mort à son secours. Il était 4 heures, au moment où je la visitai, la douleur rayonnait du rein gauche, jusqu'à l'aîne, en suivant le trajet de l'uretère. Je prescris *Pareira Brava* 6 glob. de la 6^e dilution dans un verre d'eau, une cuillerée de 5 en 5 minutes. A la 2^e cuillerée, la crise se calme presque instantanément, et la malade repose paisiblement pendant toute la nuit.

Cet accident ayant ainsi démontré la justesse de mon diagnostic, dont il a été comme le critérium, j'ai, pendant cinq semaines, continué avec *Pareira Brava*; *Copaivae Bals.*; *Hélonin*; *Azotate d'urane*, et *Thea viridis*, le traitement de la néphrite parenchymateuse. Sous l'influence de ces remèdes, donnés chacun en une seule dose, le matin à jeun, avec des intervalles de repos convenables, les progrès de l'amaigrissement se sont arrêtés, l'albumine a été réduite des 2/5, et des cristaux de carbonate de chaux se sont mêlés à ceux de moins en moins nombreux d'oxalate de chaux. En outre, l'appétit est revenu, et la malade a pu non-seulement marcher dans son appartement, mais encore parcourir à pied quelques centaines de mètres dans la rue, et monter un escalier d'une vingtaine de marches.

L'action de *Pareira Brava* sur le symptôme coliques néphrétiques et sur la modalité des reins a été aussi efficace que rapide.

QUATRIÈME OBSERVATION.

M^{me} Béretta, âgée de 51 ans, rue des Beaux-Esprits, 14, a eu deux enfants; elle est entrée dans la période de la ménopause il y a 2 ans, et depuis cette époque, elle a eu de violentes crises de coliques néphrétiques, à la suite desquelles ses urines noirâtres ou sanguinolentes et écumeuses, laissent déposer des poussières briquetées d'acide uriqué. Avant la ménopause, elle a souffert d'un rhumatisme à l'épaule gauche.

M^{me} Béretta me fait appeler, pour la première fois, le 21 août 1873. Je la trouve alitée, en proie à de cruelles douleurs des reins, s'étendant le long du trajet de l'uretère gauche, urinant goutte à goutte et avec un violent ténesme, et vomissant péniblement et après des nausées successives, quelques gorgées d'un liquide bilieux. Elle m'apprend que, même en dehors des accidents néphrétiques, elle voit habituellement dans ses urines de petits calculs ne dépassant pas le volume d'un grain de petit millet.

J'administre *Pareira Brava* 12^e une goutte, dans 150 gram. d'eau distillée, à prendre par cuillerées à café de quart d'heure en quart d'heure.

Le lendemain 22, les douleurs ont notablement décru; l'urine coule plus librement; elle est d'un rouge foncé, troublée par quelques mucosités; les vomissements ont cessé. - Prescription *Pareira Brava* 24^e une goutte 150 aq. stil., une cuillerée de trois heures en trois heures. - Bouillon dé bœuf.

Le 23, toute sensibilité de la région lombaire et de l'uretère a disparu; les urines ont entraîné un petit calcul rouge de la grosseur d'un grain de blé, - elles sont limpides et ne laissent plus déposer de mucosités.

Je la revois le 26 et le 29 en franche convalescence, et je lui fais continuer *Pareira Brava* 30^e une cuillerée deux fois par jour.

Madame Béretta vient me consulter le 25 octobre. Elle a souffert un peu de la région lombaire et voudrait conjurer une crise qu'elle redoute, en raison des prodromes trop connus de ses précédentes atteintes. *Pareira Brava* 12^e est donné avec un tel succès, que je n'entends plus parler de cette malade jusqu'au 11 du mois d'août 1874, époque où de nouvelles douleurs lombaires sont encore dissipées en trois jours par une dernière potion de *Pareira Brava* 24^e par cuillerées trois fois par jour.

CINQUIÈME OBSERVATION.

M. X., ancien officier dé mariné, demeurant au faubourg du Moûrillon, âgé de 58 ans, est depuis une dizaine d'années sujet à des coliques néphrétiques, et ses urines laissent habituellement déposer de petits cristaux d'acide urique. La première crise qui eut lieu en 1865 fut extrêmement douloureuse et de longue durée. - Je la combattis par les moyens appropriés : *Nux vomica*, *Bryonia*, *Uva ursi*, etc., et c'est par les médicaments ordinaires que je traitai les crises successives qui se succédèrent, à d'assez longs intervalles, avec le même caractère de ténacité.

Au mois d'août 1874, une violente atteinte, traitée uniquement avec *Pareira Brava*, n'a duré que deux jours et les conséquences n'en ont été, ni aussi graves comme épuisement, ni aussi pénibles comme symptômes ultérieurs.

SIXIÈME OBSERVATION.

M. X., capitaine de frégate, âgé de 57 ans; éprouva, au mois de juillet 1874, une violente attaque de coliques néphrétiques, qui le tint au lit ou à la chambre pendant 8 ou 9 jours, Comme

commémoratifs, ce malade a eu de fréquentes atteintes de rhumatisme et de névralgies rhumatismales.

Appelé à soigner, en décembre 1874, une nouvelle crise, j'administrai *Pareira Brava* 6 globules de la 12^e dil., dans un verre d'eau, une cuillerée de 3 en 3 heures. Je constatai que les urines offraient un sédiment briqueté. En deux jours, les douleurs avaient entièrement disparu, et M. X. put commencer une tournée d'inspection des côtes du 5^e arrondissement maritime, et l'accomplit sans incident pendant une dizaine de jours. Le même médicament doit être continué de mois en mois alternativement avec le *Juniperus communis*.

J'aurais pu multiplier les observations qui tendent à prouver la remarquable efficacité du *Pareira Brava* contre les coliques néphrétiques, occasionnées par des calculs des voies urinaires. Mais il me semble que celles que je viens de donner suffisent à cette démonstration, et justifient suffisamment l'appel que je fais aux médecins de notre école pour vérifier expérimentalement la pathogénésie de ce précieux médicament.

Aller au-delà de ce desideratum serait superflu, et les doctrines thérapeutiques, qui ont nos croyances, nous interdisent de faire des théories ou des raisonnements hypothétiques sur les indications probables que l'on pourrait induire de son action élective sur les reins. C'est à l'expérience de prononcer souverainement avec la précision à laquelle la méthode de Hahnemann nous a heureusement habitués. Je crois devoir ajouter que les préparations, qui ont servi à mes traitements, viennent de la pharmacie G. Weber, 8, rue Neuve-des-Capucines, à Paris."

Toulon, 26 février 1875.

D' TURREL.

(Dr. Turrel, Les médicaments empiriques, Pareira brava, Bibliothèque homoeopathique publiée par la Société Hahnemannienne fédérative, tome 7^e, Paris et Londres 1875, p. 33-48)

English Translation by J. Compton Burnett

"The most interesting remedy to which I will call attention to-day is the *Pareira brava* or *Vigne vierge* of the Antilles. This is how I came to make its acquaintance and to administer it:

More than twenty years ago I was physician in attendance on M. Lazare Imbert, a respectable tradesman of Toulon, who has the greatest confidence in homoeopathic treatment. This gentleman, both friend and patient, was subject to renal colic, and, during the latter years of his commercial life, often had violent attacks which threw him on his bed of intense suffering; the end of these was usually the expulsion of one or more calculi. At other times there was not any actual gravel, but there were invariably dysuria, vesical tenesmus, sanguinolent urine, and sometimes vomiting.

The colic recurred almost periodically, and, notwithstanding the treatment, seemed at times to be getting more and more insupportable. Hence, M. L. Imbert gradually gave ear to his friends who were sufferers from like complaints, and who vied with one another in praising each one his own specific. One had been cured by a decoction of roasted *Chick-peas*; another had successfully used *Haarlem oil*, but which did not prevent his being subsequently operated on for stone by lithotripsy. However, my client got this oil which calmed some of his attacks, but did not prevent their returning at the usual periods.

A physician who first practised homoeopathy in Toulon being in Mr. Imbert's shop, one day in 1868, recommended him to take 10 grammes of the root of *Pareira brava* boiled in three glassfuls of water, which, boiled down to one glassful, was to be taken every morning on an empty stomach.

Mr. Imbert took his advice, and, in answer to my recent inquiries for the purpose of procuring details for this paper, now writes to me from the country, where he now lives, as follows:

"For some time I took the infusion (qy. decoction ? *Trans.*) advised by M. Daniel and got on

well with it, but one day I was seized with a terrible attack. You (our author) were at once sent for; obliged to keep my bed, in pain for a week. I gave birth to the nicest little stone I ever made in my life. Knowing the use I had made of the decoction of *Pareira brava*, it occurred to you to hand over a certain quantity of the root to M. Ferrat, the homoeopathic chemist. He made a tincture from it and gave me a little bottleful. Since then I have used this successfully in ameliorating my sufferings. I think there is hardly any other medicine so good against this accursed malady, if not exactly as a cure, yet certainly as offering one very great relief, but I must confess that the *Haarlem oil* is also a capital thing. I use them both by turns."

I have thought it well to give Mr. Imbert's recollections verbatim: my fellow-practitioners will perceive that I was led to make a more regular preparation of the *Pareira brava* because it appeared to me that the concentrated decoction had produced a homoeopathic aggravation. It was, therefore, but natural that I should have recourse to a more regular preparation of a substance which seemed worthy of being employed. It is in administering it in infinitesimal doses that I obtained the conviction that *Pareira brava* is a very powerful modifier of nephritic colic when proceeding from renal calculi. But I do not deny that a regular course of treatment, with appropriate diet, is requisite for getting rid of the morbid condition occasioning the colic. Now, Mr. Imbert, like most other rheumatic and gouty patients, had neither the courage nor the perseverance to submit himself during the intervals of the attacks to a diet suitable to proper homoeopathic treatment. Nevertheless I am persuaded that the incontestable elective action on the kidneys of *Pareira brava*, by modifying the morbid condition giving rise to uric acid, may be successfully used in combating the gout and the rheumatism of which the nephritic colic is the most prominent symptom.

But we must subject this valuable remedy to experiment after the manner of Hahnemann; indeed, we have no pathogenesis of this bindweed of the Antilles. The little that is known of it is collated in the *Flore médicale* by *Descourtilz*, formerly government medical officer at St. Domingo, published in 1827. ⁽¹⁾

(1) A little more than *two hundred years ago* *Piso* (Hist. Nat. et Med., lib. iv, p. 261) gave the world absolutely this same information ! Poor *Piso* must have seen a good way ahead, for he quotes thus from Seneca: - " Veniet tempus, quo ista, qua nunc latent, in lucem dies extrahet, et longioris aevi diligentia." - *Translator*.

From this I extract as follows:

"Round-leaved *Pareira*; bindweed with heart-shaped leaves; *Pareira brava*; *Cissampelos butua*, or *Vigne vierge à bâtons*, of the family of the *Menispermaceae*; grows in the mountainous districts of the Brazils, of St. Domingo, of Cuba, of Martinique, and of the other Antilles where the negroes think a deal of it as a remedy and as an alexiteric. The root is the part used, and it is given in the form of powder from a drachm to two grains. Three grains are enough for two litres of water, which is to be reduced to one half.

The virtues of this plant, although disputed, are none the less real in calculous nephritis and dyspnoea; this has been recognised a thousand times in the colonies. It evidently loosens the viscous matter that chokes up the bronchi and perceptibly and promptly favours its expulsion. It is also used in gonorrhoea, and for the purpose of arresting certain haemorrhages. Its leaves applied to wounds and ulcers markedly hastens cicatrisation. The juice of this climbing plant has the power of at once neutralising the bites of venomous serpents. Of six negroes bitten by the serpents and who were received into the hospital of St. Pierre at Martinique, three were cured by the use of the *Pareira brava*. The other two perished within four hours because the remedy could not be administered to them. I have a great number of exact and well-observed facts which authorise me in publishing this property of this precious gift of nature; these observations were made especially in those cases in which general measures, although rational, had failed, and in which the death of the sufferers seemed certain notwithstanding timely cauterising, and in which this vegetable antidote was triumphant."

We see from this quotation that this practical physician in the Antilles did not close his eyes against light. Notwithstanding his deference for *general* and *rational* measures, *Descourtiz* recognised specifics; he had a leaning towards them, he seems to have caught a glimpse of the experimental method, or at least of the elective action of medicines so admirably demonstrated by Hahnemann, and now-a-days proclaimed even by the detractors of the great physician.

To justify the value I attach to the *Pareira brava* I publish some observations on the results I have obtained with it in my practice.

Case 1. - M. S - , a retired storekeeper, aet. 50, came under my care March 9th, 1871. He is in bed, suffers much these seventeen days from renal colic, which first showed itself a year ago; the attacks occur about every three months, and are getting longer and more violent. He has passed urinary calculi several times, and during his campaigns he had several attacks of rheumatism. All medication having been in vain, he now in despair has recourse to homoeopathy.

The urine is scant, red, with a brick-dusty sediment. Dysuria, thirst, obstinate constipation. Patient can hardly bear being in bed, but he is compelled to keep to it. I prescribe *Pareira brava* 30, 24, and 12, a drop of each, in each 150 grammes of distilled water, a spoonful to be taken in turns hourly. To drink cold water in which a few lumps of sugar have been dissolved.

From the 10th to 15th March the pains are subsiding, the dysuria ceases, the urine becomes abundant and is now without any sediment. Remaining in bed is no longer disagreeable, and, on the 18th, the patient calls at my house to know if he has to go on with the treatment, as he feels himself right again. I recommend him not to forget that he is only getting over an attack, and suggest the propriety of his calling to see me from time to time. I prescribe *Pareira brava* 30 and 24, one drop of each in 150 grammes of distilled water in alternation every morning on an empty stomach.

April 14th. - Urine is still limpid, *Par. brava* 24 and 12 ut supra.

June 1st. - In consequence of some irregularity in his diet (tobacco, liqueurs), and perhaps from the before-mentioned periodicity, my patient complains of a dull pain in the lumbar region. I give him *Par. brav.* θ gtt. j, in Aq. 150 grammes to be taken every four hours. I see him again on the 15th, when he tells me of having passed a good deal of small gravel with but very little pain. I give *Pareira brava* 6, and do not see him again till July 1st, 1873.

During this period of twenty-five months my patient has not had any relapse, although he has not kept to the diet which was prescribed during the attack. At this date he hurried to me because of some lumbar pains, and some brick-dusty sediment in his urine. *Pareira brava* 30 mastered this condition in a few days.

On the 9th July I gave *Par. brav.* 24.

On the 19th *Par. brav.* 12, and the effects of this treatment continue to this day (February 25th, 1875), since he has not had any attack these twenty months.

The treatment consisted solely in the use of this one remedy, the *Pareira brava*, of which I have been able to show the efficacy in all the dilutions from the mother tincture up to the thirtieth centesimal dilution. In this case we observe not only the prompt relief of the sufferings arising from the passage of the gravel, but also the progressive diminution in the severity of the attacks, of which the intensity and periodicity have been so happily modified.

Case 2. - M. M - , a retired naval captain, has suffered for some time from rheumatism. Endocarditis supervened, characterised by a systolic aortic souffle, pains in the precordial region, intermittent pulse (stenosis of the aortic orifice). Patient feels an excessive oppression when going up hill, and for some time he has suffered cruelly from insomnia and impossibility of staying in bed. These symptoms have been much relieved by appropriate treatment in which

Arsenicum and *Belladonna* played a principal part.

January 19th, 1875. - Patient feels at about 2 p.m. contusive pains in the region of the kidneys. He perceives with some anxiety that his urine has become scanty, he passes it with painful tenesmus, it is of a deep red colour, almost blackish, and it deposits a brick-dusty sediment at the bottom of the vessel. The renal colic is getting worse and worse, and towards 8 in the evening it becomes so unbearable that patient, who always has a certain dislike to bed, drags himself along as far as my house, supported by a friend, and mad with pain he calls upon me to help him. I prescribe *Pareira brava* 6, one drop in 150 grammes of distilled water, to be taken by the teaspoonful every five minutes as long as the pains are so intense. I recommend him to lengthen the intervals between the doses as soon as the pain is a little assuaged.

On the morning of the 20th I go to see my patient, whom I find in bed calm and completely relieved; he tells me that soon after taking the first few spoonfuls of the medicine he began to feel better, but he had such a dread of a return of the atrocious pains that he went on taking the medicine by the spoonful every five minutes until 11 p.m., when he finished it. From this moment he got quiet sleep, and I now see that his urine has become clear; it is also passed with ease and less scantily.

In this case the effect of the *Pareira brava* was rapid and decided against haemorrhage from the ureters arising from the passage of gravel; this is two months ago, and there has been no return.

Case 3. - Countess P. S - , at the Grand Hotel, had been for some time in a sad condition of marasmus, arising originally just after her menopause more than ten years ago, when she had albuminous nephritis which was treated with preparations of *Arsenic* in allopathic doses. Patient was declared to be cured by her medical man, still she went on getting thinner and thinner until her state became one of great anxiety. Three years ago, at Como, patient had a severe attack of pneumonia, from which she made a good recovery under homoeopathic treatment. One is struck with patient's withered condition; she suffers a good deal from oppressed breathing since her pneumonia; in fact so much so that the least movement of her arms, or walking a few steps in her room, produce suffocative dyspnoea. It follows that she could neither get to bed without help, nor yet go upstairs. She sleeps well, but only in an almost sitting posture. Anorexia, although the digestion is not very bad. Although she has no cough or night sweats, still, with the recent pneumonia in fresh remembrance, phthisis is being feared, and a physical examination of the chest is thought desirable. This giving a negative result, I turned my attention to the urine, which I find contains a good deal of albumen, epithelial cells, and tube-casts, and reddish-brown crystals of the oxalate of lime. Patient urinates without pain, and the quantity of urine passed in twenty-four hours is about a litre.

Diagnosis. - Parenchymatous nephritis.

December 19th, 1874. - Prescription *Arsenicum* 30, six globules in a glass of water, to be taken by the spoonful three times a day.

25th. - Called in a great hurry to see the Countess, who, for the last three hours, is suffering from great pain in the left lumbar region. This strange and unexpected pain is so violent that it drives the patient to despair, and she calls death to release her. It was 4 o'clock when I saw her, and then the pain radiated from the left kidney to the pubes, following the course of the ureter. I prescribe *Pareira brava*, six globules of the 6th dilution, a spoonful every five minutes. At the second spoonful the attack quieted down almost instantaneously, and patient rested peacefully all night.

This occurrence having thus demonstrated the truth of my diagnosis, of which it was as it were the criterion, I continued for five weeks with *Pareira brava*, *Copaiba balsam*, *Helonin*, *Uran. nit.*, and *Thea viridis* in my treatment of the parenchymatous nephritis. Under the

influence of these remedies, each given by the single dose on an empty stomach in the morning, and with suitable intervals of rest, the progress of the emaciation was arrested, the quantity of albumen was reduced by two fifths, and crystals of the carbonate of lime were found mixed with those of the oxalate which had become less and less numerous. Besides, her appetite returned, and patient can not only walk about in her rooms, but also do a little walking in the street, and manage to get up a flight of stairs of some twenty steps.

The action of *Pareira brava* upon the symptom of renal colic and on the state of the kidneys was as rapid as it was efficacious.

Case 4. - Mrs. B - , aet. 51, has had two children; she changed two years since, and from that time on she has been subject to violent attacks of renal colic, following which her urine is blackish or sanguinolent and frothy, and deposits a brick-dusty sediment of uric acid. Before her menopause she suffered from rheumatism in her left shoulder.

I saw patient for the first time August 21st, 1873. I find her in bed a prey to horrid pains in her kidneys, which pains follow the course of the left ureter. She urinates by the drop, and has violent vesical tenesmus; she vomits a little bilious fluid with difficulty, and after much nausea. She tells me she often sees little calculi in her urine about the size of millet seeds.

I administer *Pareira brava* 12, one drop in 150 grammes of distilled water, a teaspoonful every quarter of an hour.

On the morrow, 22nd, the pains have markedly decreased, the urine is passed with less difficulty, and is dark red and mixed with mucus; the vomiting has ceased. Prescription, *Pareira brava* 24, one drop in 150 grammes of distilled water, a spoonful every three hours. Beef tea.

The 23rd. - All pain in the lumbar region and along the ureter has ceased; the urine has brought along with it a little calculus of the size of a grain of corn, and it is clear and limpid. I see patient again on the 26th, and again on the 29th, in full convalescence, and I let her go on with *Pareira* 30, a spoonful twice a day.

Patient called on me October 25th. She has been suffering a little in the lumbar region and would like to prevent an attack which from the prodromal symptoms seems to be advancing. *Pareira brava* 12 is given with such success that I do not again hear from patient till August 11th, 1874, at which time she was again suffering from lumbar pains which yielded in three days to *Pareira brava* 24, a spoonful three times a day.

Case 5. - Mr. X - , a retired naval officer, aet. 58, has been suffering these ten years from renal colic, and his urine usually deposits little crystals of uric acid. The first attack, which occurred in 1865, was extremely painful and of long duration. I combated it with proper remedies, *Nux vomica*, *Bryonia*, *Uva ursi*, &c, and subsequent attacks I treated in the ordinary way; these attacks occurred at long intervals, and were of a very stubborn character.

In the month of August, 1874, a violent attack treated solely with *Pareira brava* lasted only two days, and the subsequent exhaustion and the ulterior symptoms were nothing like so severe as formerly.

Case 6. - M. X - , captain R.N., aet. 57, had a violent attack of renal colic in July, 1874, which confined him to his bed or his room for eight or nine days. As to anamnesis, patient has had frequent attacks of rheumatism and of rheumatic neuralgia.

Called upon in December, 1874, to treat a fresh attack, I administered *Pareira brava*, six globules of the 12th dilution in a glass of water, a teaspoonful every three hours. He informed me that his urine deposited a brick-dusty sediment. In two days all pains had disappeared, and patient was able to go off on a tour of inspection of the coast, which took him about ten days. He is to continue taking the same medicament every month in alternation with *Juniperus communis*.

I might have given many other cases which go to prove the very remarkable efficacy of *Pareira brava* in renal colic arising from the passage of renal calculi. But I think that those which I have just offered sufficiently demonstrate the point, and quite justify the appeal which I make to the medical men of our school to verify the pathogenesis of this precious remedy experimentally.

More than demonstrate this would be superfluous, and the therapeutical doctrine in which we believe forbids our setting up theories and hypothetical reasonings upon this or that probable indication that we might deduce from its elective action on the kidneys. It is for experience to give its sovereign decision with the precision with which the Hahnemannian method has long since familiarised us."

(Pareira Brava. By Dr. Turrel (of Toulon). Translated by Dr. Burnett from the Bibliothèque Homoeopathique, No. 2, 1875. The British Journal of Homoeopathy vol. 33 (1875), p. 591-600)

1883 - A woman could not pass urine in any position except on her knees since her confinement two weeks ago - W. J. Martin

"Mrs. P., primipara, was confined November 15th, 1881. Made a good recovery. In about two weeks after the birth of her child, she told me that since her confinement she could not pass urine in any position except on her knees. This, to say the least, was very inconvenient. A few doses of *pareira brava* 3 cured."

(W. J. Martin, M.D., Pittsburgh, Clinical Cases in which some of the less frequently used remedies were employed, Transactions of the Homoeopathic Medical Society of the State of Pennsylvania, Nineteenth Annual Session, Pittsburgh 1883, p. 58)

1885 - Notes on Pareira brava - C. M. Foss

"In order to become good prescribers, it is necessary for us to retain the leading symptoms of the remedies in our minds; and for these purposes the keynote system is brought into use.

There is such a similarity in many of the symptoms of our remedies, that we must have some landmark for each medicine. Now, when we have verified any symptom by a cure or cures, let us make a note of the symptoms that led us to prescribe the remedy; and in this way we may add much of value to our materia medica. I purpose here to give a few symptoms that I have substantiated by cures, with some of the remedies less frequently used. (...)

PAREIRA BRAVA. - Violent pain, with strangury; wants to press head against the floor when trying to pass water, and can pass but few drops, with violent pain, even spasms.

Dropsical swelling of feet and legs.

Urethritis, with violent pain when passing water, and discharge of mucus from urethra.

Violent itching in urethra its whole length, with scalding when passing water; distress afterwards, with shooting pain in orifice of urethra.

Urethritis, with any trouble of the prostate.

Case 1. - N.W., aet 68. An old case of prostatitis; urging to pass water all of the time, with entire inability. I used the catheter from four to six times in twenty-four hours. His feet and legs were very much swollen, and he continued to grow worse for a number of weeks; so that, when he wanted to pass water, it caused spasms, and he had to be put into a warm bath before I could pass the catheter. I was sent for in a hurry, as they thought he was dying. I found him on his knees, with his head pressed against the floor, and with cold sweat, and in that position had been able to pass a few drops of scalding urine. I at once thought of *pareira brava*; gave it to him in the 1x dilution, with rapid relief of all of the symptoms. Swelling all disappeared from feet and legs, and he has been able to attend to business since, over three years.

Case 2. - E. K. Very much like the first, - enlarged prostate, retention of urine; had spells two or three times a year, when he was in great distress, and had to have water drawn for a week or two. I had used quite a number of remedies, but after *pareira brava* 1x have not had to draw his water but twice since two years. When he feels this symptom coming on, a few drops of *pareira brava* bring him all right.

Another symptom that *pareira* has helped is dripping of a few drops of water after micturition (Selenium)."

(C. M. Foss, M.D., Dexter, Me., Notes on Materia Medica. Read before the Maine Homoeopathic Medical Society. The New England Medical Gazette vol. 20 (1885), p. 509-510)

1886 - Neuralgia of the bladder

"The remedy is one upon which we rely in all confidence when the symptoms call for it, and with it we once made a notable cure of a condition, depending probably upon lithaemia, which might be called neuralgia of the bladder. The symptoms were chiefly, a dull aching in the region of the bladder, becoming severe at times, so as to be likened to a toothache, and the patient expressed it *as a ball of painful sensation about the size of a large orange or a feeling as if the bladder was distended with pain*. The condition was most noticeable after urinating and would then last for an hour or more. *Berberis vulg.* helped for a time and amelioration was given by *Lac caninum* while *Ruta* aggravated the condition. As the trouble continued distinct neuralgic pains made themselves manifest about the hips and thighs and only after they had located repeatedly in the anterior crural region (going downward) was *Pareira* prescribed. The effect was immediate and permanent, some slight returns of the trouble afterwards being overcome by the same remedy. But a peculiarity in the case was that the urine was always clear, of high specific gravity, rather strongly urinous in odor and with not a trace of pus. At times there was an increase of mucus. The symptom, pain going down the thigh, called our attention to *Pareira*, and through this indication the chief and most distressing one, sensation as if the bladder was distended with pain, was relieved." (Editor)

(*Pareira brava*, The Homoeopathic Recorder vol. 2 (1886), p. 60)

Klinische Hinweise / Clinical Hints

1903 - Pareira brava in der Nierenkolik - Dr. Sieffert

“Dr. Sieffert bespricht in der Revue homoeopathique française (April 1908) die ausgezeichnete Wirkung der Pareira brava in der Nierenkolik, worin er um so mehr als beweiskräftiger Zeuge erscheint, als er, seit Jahren an Nierensteinen leidend, bei den zeitweisen Nierenkoliken dieses Mittel an sich selbst erprobt hat.

C. Hering bezeichnet als Wirkungen des Mittels auf die Harnorgane: Eine fast knorpelharte Verdickung der Harnblasenschleimhaut, beständiger Harndrang mit heftigen Schmerzen in der Eichel; Druck mit Schmerzen zum Schreien; der Kranke wirft sich auf alle Viere um urinieren zu können. Der Harn enthält eine Menge fadenziehenden, dicken und weissen Schleims, oder lässt ein rotsandige Sediment fallen. Schleim längs den Schenkeln bei den Anstrengungen zum Urinlassen. Der Harn hat einen merklich ammoniakalischen Geruch.

Pareira brava ist in mancher Hinsicht der Berberis analog. Jedoch ist der Berberis-Harn schleimiger, zäher als der von Pareira und setzt ein reichliches, tonartiges Sediment von dunkelgelber Farbe ab. Andererseits erstrecken sich die zerrenden Schmerzen von Pareira auf die Schenkel bis zu den Beinen herab, während die bei Berberis nur selten die Hüftgegend überschreiten.

Der Anfall von Nierenkolik beim Dr. Sieffert meldet sich in der Regel durch ein länger anhaltendes, schmerzhaftes, krampfartiges Gefühl in der Eichel. Gleichzeitig tritt Tenesmus vesicae et ani ein, der nur einen tropfenweisen Abgang von Urin zur Folge hat. Nach zwei Stunden erheben sich zerrende Schmerzen längs den Schenkeln. Damit ist der Anfall in vollem Zuge. Dr. Sieffert nimmt nun während des Anfalls nach P. Jousset's Vorgang alle halbe Stunden einen Esslöffel voll von einer Lösung von Pareira brava 12., 6 Tropfen in 200,0 Aq. destill. In den freien Intervallen eine Woche lang 2 Mal täglich Par. in der 6. oder 12., dann eine viertägige Pause und so 4 Monate fortgefahren.

In der letzten Zeit hat sich ihm diese Dosierung aber nicht mehr ausreichend gezeigt, und so hat er folgendes Verfahren eingeschlagen: Sobald sich die krampfhaften Zerrungen im Penis, sowie der Stuhl- und Blasenzwang zeigt, nimmt er alsbald 4 Tropfen der Urtinktur, sodann alle Viertelstunden 2 Tropfen der 6. Centesimal-Dilution, während er gleichzeitig reichlichen Gebrauch von Milch macht, wenn dies kein Erbrechen erregt. So vermeidet er die übermäßigen zerrenden Schmerzen; in kurzer Zeit tritt eine reichliche Harnentleerung ein und es folgt ein erfrischender Schlaf. Beim Erwachen ist Alles besser.

Das Mittel hat sich in gleicher Weise gegen den Tenesmus vesicae wie auch die Strangurie bewährt. Richey Horner hat es auch bei Neuritis cruralis anterior empfohlen. - In Brasilien, der Heimat der Pflanze, die zu der Familie der Menispermaceen gehört, wird Pareira brava als Diuretikum, Emmenagogikum und Febrifuga, äußerlich auch in Orchitis gebraucht.“

(Pareira brava in der Nierenkolik, Allgemeine homöopathische Zeitung Bd. 147 (1903), S. 58-59)

Hering's Guiding Symptoms



Constantin Hering (1800-1880)

Hering's Guiding Symptoms

Pareira Brava

Virgin Vine.

Menispermaceae.

A climbing plant, native of the West Indies and South America.

The tincture is prepared from the fresh root.

Proving by Foss, *Med. Adv.*, Dec., 1885, from *A. H. Z.*, vol. 113, p. 71.

Clinical Authorities

Renal colic (six cases), Turrel, *Hah. Mo.*, vol.10, p. 442; B. J. H., vol.33, p. 591; *Dysuria*, Martin, *T. H. M. S. Pa.*, 1883, p. 58; *Enlargement of prostate gland and retention of urine*, Foss, *A. H. Z.*, vol.113, p. 70; *Catarrh of bladder*, Hull, *N. A. J. H.*, vol.18, p. 491; Hastings, B. J. H., vol.13, p. 591.

Urinary Organs

! Excruciating pains in left lumbar region; pain radiates from left kidney to groin, following course of ureter. θ Renal colic.

! Black, bloody, foaming urine, depositing a brickdust sediment of uric acid; deep red and mucous urine.

ii Excessive pains in kidneys, shooting down left ureter; passes urine drop by drop, with violent tenesmus, nausea and vomiting of bilious fluids. θ Nephritic colic.

ii Nephritic colic; patient suffering for seventeen days; attacks first appeared a year ago, come regularly now every three months, last longer and are more violent each time; several times passed uric calculi, and suffered from rheumatic attacks when traveling; dull pains in lumbar region; urine scanty, red, with brick-dust sediment; dysuria; thirst; obstinate constipation.

! Contusive pains in renal region; urine scanty, deep red, nearly black, passed with great tenesmus, depositing brickdust sediment.

! Nephritic colic with hemorrhage of ureters provoked by passage of stones.

! For last ten years nephritic colics; passes frequently small crystals of uric acid; attacks usually severe and obstinate.

Atrocious pains with strangury.

Almost touches floor with forehead in order to be able to pass urine.

!! Constant urging to urinate, violent pain in glans penis; straining; pain extorts screams; must get down on all fours to urinate; urine contains much viscid, thick, white mucus, or deposits red sand.

! Pains down thighs during efforts at urination.

! Paroxysms of violent pain with strangury; he cries out loudly and can only emit urine when he goes on his knees, pressing his head firmly against floor; remaining in this position for ten or twenty minutes, perspiration breaks out, and finally urine begins to drop with interruptions, accompanied by tearing, burning pains at point of penis.

! Since confinement two weeks previously, could not pass urine in any position except on knees. θ Dysuria.

Tormenting feeling after urination, with shooting pains in orifice of urethra.

Intolerable itching along urethra, with burning on urination.

Severe spasmodic pains while urinating.

ii Constant ineffectual urging to urinate; catheter had to be used four to six times in twenty-four hours; swelling of legs and feet; cramps on attempting to urinate, patient had to be put into a warm bath before catheter could be used; his last hour seemed to be approaching when found kneeling upon floor bathed in a cold sweat, head firmly pressed against floor, in which

position alone he was enabled to pass a few drops of burning hot urine. θ Enlargement of prostate gland.

ii Enlargement of prostate gland with retention of urine; two or three times a year patient is seized with severe and painful attacks, during which catheter had to be used for several weeks.

ii Severe pains at times in back and bladder with painful retraction of left testicle; pain in thigh extending down to big toe and sole of foot; frequently an irritable eruption on legs and great irritation on scalp; urine passed with great difficulty; feels a great desire to urinate, fancies quarts will come away, but finds the greatest difficulty to get any to pass, notwithstanding the severe pressive pains attending it; pains so severe that he is obliged to get on knees, press head firmly against something and remain in that position, forcing until he sweats profusely and "roars like a bull, " to use his own expression; after remaining in this situation ten or twenty minutes, urine dribbles away with great pain and frequent stoppages, scalding and lacerating at point of penis; urine has strong ammoniacal smell, and is loaded with thick, tenacious mucus; paroxysms generally occur from 3 to 6 A.M.; during day comparatively easy; cartilaginous condition of inner coat of bladder which felt very hard to the sound; sweats at night; hammering and buzzing noises in head. θ Chronic catarrh of bladder.

Flow of mucus from urethra.

Male Sexual Organs

Urethritis with prostatic disorders.

I Gonorrhoea.

Voice and Larynx. Trachea and Bronchia

I Viscous matter lodged in and obstructing bronchi.

Lower Limbs

Oedematous swelling of lower limbs.

Rest. Position. Motion

Must get down on all fours to urinate.

Must get on knees and press head firmly against floor to urinate.

Attacks, Periodicity

For ten or twenty minutes : must remain on all fours to urinate.

Every morning from 3 to 6 : paroxysms of pain during urination.

Every three months : attacks of nephritic colic.

Two or three times a year : painful attacks of renal colic.

For last ten years : nephritic colics.

Locality and Direction

Left : pain in lumbar region radiating from kidney to groin, pain down ureter.

Sensations

Pains : down thighs.

Excruciating pains : in left lumbar region; in kidneys.

Violent pains : in glans penis; in bladder; in back.

Severe spasmodic pains : while urinating.

Tearing, burning pains : at point of penis.

Shooting pain : down into left ureter into toes and soles.

Contusive pain : in renal region.

Dull pains : in lumbar region.

Stages of Life, Constitution

Rheumatic or gouty subjects suffering from renal colics.

Man, aet. 50, suffers from rheumatic attacks when traveling; renal colic.

Madame Beretta, aet. 51, two years ago menopause set in, since then suffering; nephritic colic.

Officer of navy, aet. 57, six months ago had first attack, which confined him to bed eight or nine days; renal colic.

Marine officer, aet. 58, suffering for last ten years; nephritic colic.

Man, aet. 60, temperate habits; catarrh of bladder.

Man, aet. 68, regular and temperate all his life, never had syphilis or gonorrhoea, no profession or trade, suffering for years; catarrh of bladder.

Man, aet. 68, suffering many years; enlargement of prostate gland.

Mrs. P., primipara, confined two weeks ago, since then suffering; dysuria.

Mrs. M., suffering from marasmus for last ten years or since her climaxis, when she had an attack of albuminous nephritis, three years ago had pneumonia; now suffers from parenchymatous nephritis; renal colic.

Seafaring captain, suffering for years from rheumatism and later from endocarditis; renal colic.

Relations

Compare : *Chimaphila* and *Uva ursi* in spasm and burning in bladder, ropy urine; *Hydrangea arb.*; *Berberis*, which has pains more in back and hips, and has a loamy sediment.

(Constantin Hering, The Guiding Symptoms of our Materia Medica, vol. 8 (1889), Pareira Brava, p. 263-266)

Leitsymptome und Charakteristika / Keynotes and Characteristics

Übersicht / Overview

1866 - Adolph Lippe
1902 - John H. Clarke
1915 - Cyrus M. Boger
1927 - William Boericke
1929 - N. M. Choudhuri

1866 - Adolph Lippe

Urinary Organs.

Micturition difficult, with much pressing and straining only in drops, with the sensation as if the urine should be emitted in large quantities.

Violent pains in the bladder, and at times in the back; the left testicle is painfully drawn up; pain in the thighs, shooting down into the toes and soles of the feet.

Paroxysms of violent pain with the strangury; he cries out loud, and can only emit urine when he goes on his knees, pressing his head firmly against the floor; remaining in this position for ten to twelve minutes, perspiration breaks out, and finally the urine begins to drop off with interruptions, accompanied by tearing, burning pains at the point of the penis.

Urine smells strongly of Ammonium, and contains a large quantity of viscid, thick, white mucus.

(5) The paroxysms appear generally from three to six A. M.; amelioration through the day.

Almost cartilaginous induration of the mucous membrane of the bladder.

Similar conditions of the bladder are to be found under *Berberis vulgaris*, but not the ammoniacal smell; and the pain under *Berberis* is in the hip, not, as under *Pareira*, in the thigh. *Berberis* has also paralysis of the bladder with discharge of great quantities of mucus, which deposits itself at the bottom of the vessel and is viscid.

(Adolph Lippe, M.D., Textbook of Materia Medica, Philadelphia 1866, *Pareira Brava*, p. 513)

[“No proving is given in Allen's Encyclopedia, and in response to an inquiry by Dr. Allen, Dr. Lippe stated that the symptoms as given in the Text-Book were wholly clinical; that there was no proving.” (The Homoeopathic Recorder vol. 2 (1886), p. 60)]

1902 - John H. Clarke

Description. - *Pareira brava*. *Cissampelos pareira*. Velvet Leaf. Virgin Vine. N. O. Menispermaceae. Tincture of fresh root.

Clinical. - *Bladder, catarrh of.* - *Calculus.* - Dysuria. - Gonorrhoea. - Leucorrhoea. - Prostate, enlargement of. - Renal colic. - Urine, slimy.

Characteristics. - *Pareira* is a climbing plant, a native of the West Indies, Central America, and India. The root has a traditional use in diseases of the bladder and urinary organs.

A short proving by C. M. Fox, of Denver (*Med. Adv.*, xvi. 319), brought out some characteristic symptoms which have been clinically confirmed.

Among these are: “Violent pains with strangury; must go on "all-fours" and press head against floor to pass water at all.”

“Urethritis with severe pain when passing water, and discharge of mucus from urethra.”

“Pains down thighs and even to feet when attempting to pass water.”

“Violent pain in glans penis” with the straining.

Fox relates two cases of prostatic enlargement with dysuria in which *Par.* gave complete relief.

(1) Man, 68, old prostatic affection; constant urging with entire inability. Feet and legs much swollen; had to be put in a warm bath before catheter could be passed. Only on hands and knees, with forehead pressed on the floor, could he pass a few drops of scalding urine. *Par. b.* 1 x gave rapid relief. Swelling disappeared from legs, and he was able to resume his business and continue at it for years.

(2) Enlarged prostate with retention; severe attacks two or three times a year, when he would have to have the urine drawn off for a week or two. After using *Par. b.* the catheter was not required more than twice in two years. When he feels the symptoms coming on a few drops of *Par. b.* relieve him at once. Many other remedies had been used in vain before *Par. b.* was prescribed.

Relations. - *Compare:* Coccul. (botan.). - Spasm and burning in bladder, ropy urine, Chimaph., Uva ursi. - Prostatic affections, Hydran., Sabal ser. Renal colic, Ocim. c., Berb. Dysuria, Berb. (Berb. has pain in back extending to hips; *Par. b.* has pain extending to thighs and even toes. Berb. has paralysis of bladder with discharge of great quantities of mucus, which deposits itself at bottom of vessel and is viscid. Berb. urine lacks the ammoniacal smell of Pareira.) - Dribbling urine after micturition, Selen.

Symptoms

Urinary Organs. - Excruciating pains in left lumbar region; pain radiates from left kidney to groin, following course of ureter. Bruised pains in region of kidneys. Micturition difficult, with much straining only in drops, with sensation as if urine should be emitted in large quantities. Dropsical swelling of feet and legs; urethritis with severe pain when passing water, and discharge of mucus from urethra. Violent itching in entire length of urethra with scalding when passing water; distress after urinating, with shooting pain in orifice of urethra. Urethritis with prostatic trouble. Dribbling of urine after micturition. Violent pains in bladder, and at times in back; left testicle is painfully drawn up; frequently pains down thighs, during efforts to urinate, shooting down into toes and soles of feet. Paroxysms of violent pain with the strangury; he cries out loud and can only emit urine when he goes on his knees, pressing his head firmly against the floor; remaining in this position for ten to twenty minutes, perspiration breaks out, and finally the urine begins to drop off with interruptions, accompanied by tearing, burning pains in glans penis. Dysuria; since confinement, two weeks previously, cannot pass urine in any position except on hands and knees. Urine smells strongly of ammonia, and contains a large quantity of viscid, thick, white mucus. Black, bloody, foaming urine, depositing a brick-dust sediment of uric acid; deep red and mucous urine. The paroxysms appear generally from 3 to 6 a.m.; > through the day. Almost cartilaginous induration of mucous membrane of bladder. Enlargement of prostate gland, with retention of urine; pains extending down thighs.

Male Sexual Organs. - Urethritis with prostatic disorders. Gonorrhoea.

Respiratory Organs. - Viscous matter lodged in and obstructing bronchi.

Lower Limbs. - Oedema of lower limbs.

(John Henry Clarke, M.D., A Dictionary of Practical Materia Medica, vol. 2 (1902), Pareira Brava, p. 721-722)

1915 - Cyrus M. Boger

REGION.

Genito-Urinary Organs.

Left Side.

WORSE.

On Hands and Knees.

Must get on hands and knees to urinate; pains go into glans and thighs. Bursting feeling in bladder or glans. Dysuria. Urine contains thick, stringy, white mucus or **red sand**. Renal colic. Enlarged prostate.

(Cyrus M. Boger, M.D., A Synoptic Key to the Materia Medica, 1st edition, 1915, Pareira Brava, p. 269)

1927 - William Boericke

The urinary symptoms are most important. Useful in renal colic, prostatic affections, and catarrh of bladder. Sensation as if bladder were distended, with pain. *Pain going down thigh.*

Urinary. - Black, bloody, thick mucous urine. *Constant urging; great straining; pain down thighs during efforts to urinate.* Can emit urine only when he goes on his knees, pressing head firmly against the floor. Feeling of the bladder being distended and neuralgic pain in the anterior crural region. [*Staph.*] Dribbling after micturition. [*Selen.*] *Violent pain in glans penis.* Itching along urethra; urethritis, with prostatic trouble. Inflammation of urethra; becomes almost cartilaginous.

Relationship. - Compare : *Parietaria* (renal calculi; nightmare, patient dreaming of being buried alive); *Chimaphila* (chronic catarrhal congestion following cystitis; acute prostatitis; feeling of a ball in perineum when sitting); *Fabiana*, see *Pichi* (dysuria; post-gonorrhoeal complications; gravel; vesical catarrh); *Uva.*; *Hydrang.*; *Berber.*; *Ocim.*; *Hedeom.*

(William Boericke, M.D., Pocket Manual of Homoeopathic Materia Medica, Ninth Edition, New York 1927, Pareira Brava (Virgin Vine), p. 497)

1929 - N. M. Choudhuri

Notes

- Action limited to urinary organs.
- Constant urging; great and violent ineffectual straining; emits small quantities of urine by going down on his knees and pressing his head firmly on the floor.
- Black, bloody, foamy urine depositing a brick dust sediment; ammoniacal odor; flow interrupted; in drops with tearing, burning pains along the passage.

Pareira brava ordinarily known as Virgin Vine or Velvet Leaf is a climbing plant and a native of West Indies and South America. It belongs to the natural order of Menispermaceae. The most important field of action of Pareira brava is limited to the urinary organs. It has been proved repeatedly by eminent men of our profession and they all have found it to be efficacious in diseases of the bladder and urinary organs. The most important symptom is a constant urging for urination but then it is not evacuated easily. Great and violent straining is necessary and even then it is ineffectual. He must get down on all fours to urinate. In his agony, he cries most bitterly and can only emit small quantities of urine by going down on his knees and pressing his head firmly on the floor. In this awkward and uneasy posture, and partially due to the exertion of straining, he breaks out into sweat and then finally urine begins to drop with frequent interruptions, accompanied by a tearing, burning pain all along the passage. On this symptom it has been used in renal colic, enlargement of prostate, catarrh of the bladder and nephritic colic. A strong pain in glans penis is an important indication. Black, bloody, foamy

urine depositing a brick dust sediment of uric acid, contusive pain in the renal region, severe pain in back and bladder with painful retraction of testicles, pain extending down along the thigh to the big toe and a strong ammoniacal smell of urine are symptoms too clear and well defined for even a tyro in homoeopathy to make a mistake about.

Here is an instructive case of a man of 68 who was pretty well worn out with prostatic affection. Constant urging with entire inability to pass urine was his affliction. His feet and legs were swollen, the only possible way he could pass urine, was by assuming the peculiar Pareira brava attitude mentioned beforehand. Pareira gave him rapid relief and removed the swelling and practically put him on his legs to reassume his business.

Chimaphila, Uva ursi, Hydrangea, Sabal serrulata, Ocimum canum and Berberis are remedies bearing great resemblance to Pareira brava and it would pay us to study them closely.

(N. M. Choudhuri, M.D., A Study on Materia Medica, Second Edition 1929, Pareira Brava, p. 767-769)

Bibliographie / Bibliography

I. Die Pflanze / The Plant

- Von der Pareira Brava, Historie, in: Der Königlichen Akademie der Wissenschaften in Paris anatomische, chymische und botanische Abhandlungen, Dritter Theil, welcher die Jahre von 1707 bis 1711 in sich hält, Breßlau 1751, S.664-667

["Unter den fremden Spezereien, die der Herr de la Mare, ein Seeoffizier, mitgebracht, ist auch die Pareira brava. Der Name ist portugiesisch und heißt: wilder Weinstock. Die Wurzel kommt aus Brasilien, woselbst sie Botou oder Botoua genannt wird. Das übrige von der Pflanze kennen wir nicht; wissen auch nur aus der Erzählung der Portugiesen, daß es ein Weinstock sei. Pison, dessen natürliche Historie von Brasilien im Jahr 1648 gedruckt wurde, hat diese Wurzel nicht gekannt. Der Staatsrat Amelot ist der erste, der sie bei seiner Zurückkunft von der Gesandtschaft in Portugal 1688 nach Frankreich gebracht hat. Der Präsident Rouille, der dem Herrn Amelot in der Gesandtschaftsstelle folgte, hatte unter anderen seltenen Spezereien auch Pareira brava, und eine Schrift von sehr vielen herrlichen Eigenschaften bei sich, die ihr die Portugiesen beilegen. Deshalb richtete der Herr Geoffroy, der sich alles, was der Herr Mare mitgebracht, zu untersuchen vorgenommen, eine besondere Aufmerksamkeit auf unsere Pareira." (...)]

- Carl Günther Ludovici, Eröffnete Akademie der Kaufleute oder vollständiges Kaufmanns-Lexicon, Vierter Theil, N bis S, Leipzig 1755, Pareira brava, S. 472-473

- E. Descourtilz, Flore pittoresque et médicale des Antilles, tome 3, Paris 1827, Pareire à feuilles rouges, p. 231-234

- Daniel Hanbury, On Pareira Brava, The Pharmaceutical Journal and Transactions, 3. series, vol. 4, London 1873-1874, p. 81-83, 102-103

- Otto Warburg, Die Pflanzenwelt, Bd. 2, Leipzig und Wien 1921, Menispermaceae oder Mondsamengewächse, S. 28-31

- Gerhard Madaus, Lehrbuch der biologischen Heilmittel, Bd. 3, Leipzig 1938, Pareira brava, S. 2057-2060

- Christian Rätsch, Indianische Heilkräuter, Eugen Diederichs Verlag 1987, Curare, S. 103-107

- Leslie Taylor, The Healing Power of Rainforest Herbs, 2005, 2nd edition 2019

II. Frühere Erfahrungen / Former Experiences

- Pierre Pomet, Histoire des Drogues, Paris 1694, Du Pareira Brava, p. 69

["Depuis quelques années nous voyons à Paris une racine tout à fait semblable au *Thymelea*, à la réserve qu'elle est plus noirâtre & plus dure. Le premier qui a apporté cette racine à Paris à été Monsieur Amelot, Ambassadeur en Portugal, & après luy M. deTornefort qui m'a donné le morceau dont la figure est représentée cy dessus; quelques personnes m'ont assuré que cette racine estant dans terre pousoit des branchages chargez de feuilles tout à fait semblables à la vigne, qui rampent le long des murailles, ou des arbres. C'est pour ce sujet que les Portugais, qui ont été les premiers qui l'ont apportée de Mexique, luy ont donné le nom de *Pareira brava*, qui signifie en François *Vigne sauvage ou bâtarde*; & depuis que Monsieur Amelot en a apporté à Paris, Monsieur Thevard Medecin de la Faculté & quelques autres, l'ont mise en usage, comme un remede spécifique pour la guérison de la pierre; on la prend en poudre dans du vin blanc, le matin à jeun; pour ce qui est de son choix, Monsieur Thevard m'a assuré que celle de Mexique estoit beaucoup meilleure que celle de Portugal; & par une Lettre que j'ay receu de Lisbonne le 16. Octobre 1692. on me marque : Le Pareira brava qui vient des Indes & du Bresil est une racine plus commune que l'Ipecacuanha, on en trouve presque chez tous les Apoticaire de ce pays, mais la quantité n'en est pas grande; ils la vendent dix testons, qui sont environ cinq livres de nôtre monnoye. Voilà tout ce que j'ay pû apprendre de cette racine nouvellement connuë en France."]

- Helvetius, *Traité des Maladies les plus fréquentes et des remèdes spécifiques pour les guérir*, Paris, 1703, p. 98-102

[La Parera Brava est une diuretique: (...) "Ce sont les Diuretiques les plus excellents, & donc on s'est servi jusqu'à présent, avec beaucoup de succès, dans les Maladies que nous avons nommées; mais comme ils ne réussissent pas toujours également bien, on a cherché des Remèdes plus efficaces, & on a trouvé que la Racine de Parera Brava l'emportoit sur tous les autres Diuretiques. Elle fermente doucement avec le Sang, & elle ne se charge que de quelques Soulfres volatils, propres à emporter les obstacles qui arrêtent le cours des Urines: soit qu'ils soient causez par la Gravelle, soit par les Glaires, soit par d'autres Accidents. Ce Remède m'a été donné par M. de Pille, connu dans toute l'Europe pour un homme tres-curieux & tres-savant. Il en a fait la découverte, pendant qu'il étoit à la suite de Mr Amelot Conseiller d'Etat, Ambassadeur de France en Portugal. (...) J'ai éprouvé que ce Remède est aussi spécifique contre les différentes Maladies des Reins & de la Vessie, que le sont le Quinquina, l'Hypocistis & l'Alun pour les maux où on les employe si efficacement. (...) Ce Remède est encore tres-utile dans les Hydropsies naissantes, à cause de sa qualité de Diuretique."]

- M. F. Lochner, *Schediasma de pareira brava*, Nürnberg 1719

- Etienne-François Geoffroy, *Abhandlung von der Materia medica, Zweyter Theil, Von den ausländischen Pflanzen*, Leipzig 1761, *Von der amerikanischen Grieswurzel*, S. 31-37

III. Homöopathie

- Dr. Hastings, *Cases of gleet, and inflammation of the kidneys and bladder, treated by Agnus and Pareira brava*, *The British Journal of Homoeopathy* vol. 13 (1855), p. 591-594

- Adolph Lippe, M.D., *Textbook of Materia Medica*, Philadelphia 1866, *Pareira Brava*, p. 513

- A. H. Hull, *Catarrh of the Bladder*, *The North American Journal of Homoeopathy* vol. 18 (1870), p. 491-493

- Dr. Turrel, *Les médicaments empiriques, Pareira brava*, *Bibliothèque homoeopathique publiée par la Société Hahnemannienne fédérative*, tome 7^e, Paris et Londres 1875, p. 33-48
- angl.: *Pareira Brava*. By Dr. Turrel (of Toulon). Translated by Dr. Burnett from the *Bibliothèque Homoeopathique*, No. 2, 1875. *The British Journal of Homoeopathy* vol. 33 (1875), p. 591-600

- W. J. Martin, M.D., *Pittsburgh, Clinical Cases in which some of the less frequently used remedies were employed*, *Transactions of the Homoeopathic Medical Society of the State of Pennsylvania, Nineteenth Annual Session*, Pittsburgh 1883, p. 58

- C. M. Foss, *Notes on Materia Medica*, *The New England Medical Gazette* vol. 20 (1885), *Pareira brava*, p. 509-510

- Reprinted in: *The Medical Advance* vol. 16 (1885), p. 319-320

- dt.: *Allgemeine homöopathische Zeitung* Bd. 113 (1886), S. 70-71

- James Lembke, *Pareira brava-Prüfung*, *Allgemeine homöopathische Zeitung* Bd. 113 (1886), S. 206-207

- *Pareira brava*, *The Homoeopathic Recorder* vol. 2 (1887), p. 60-61

[Case of neuralgia of the bladder. - Review of Lembke's proving: "Except that stools became hard and the urine was somewhat darker in tint, no influence was exerted by the drug."]

- Constantin Hering, *The Guiding Symptoms of our Materia Medica*, vol. 8 (1889), *Pareira Brava*, p. 263-266

- John Henry Clarke, M.D., A Dictionary of Practical Materia Medica, vol. 2 (1902), Pareira Brava, p. 721-722

- Dr. Sieffert, Pareira brava, Revue homoeopathique française April 1903
 - dt.: Pareira brava in der Nierenkolik, Allgemeine homöopathische Zeitung Bd. 147 (1903), S. 58-59
 - engl.: Pareira brava, The Homoeopathic Recorder vol. 17 (1902), p. 270-271; Pareira brava in Renal Colic, The Homoeopathic Recorder vol. 18 (1903), p. 563-564

- Cyrus M. Boger, M.D., A Synoptic Key to the Materia Medica, 1st edition, 1915, Pareira Brava, p. 269

- William Boericke, M.D., Pocket Manual of Homoeopathic Materia Medica, Ninth Edition, New York 1927, Pareira Brava (Virgin Vine), p. 497

- N. M. Choudhuri, M.D., A Study on Materia Medica, Second Edition 1929, Pareira Brava, p. 767-769